



[Go to Product page](#)

Datasheet for ABIN1535282
anti-RREB1 antibody (AA 560-609)

1 Image

Overview

Quantity:	100 µg
Target:	RREB1
Binding Specificity:	AA 560-609
Reactivity:	Human, Mouse
Host:	Rabbit
Clonality:	Polyclonal
Conjugate:	This RREB1 antibody is un-conjugated
Application:	ELISA, Immunohistochemistry (IHC)

Product Details

Immunogen:	The antiserum was produced against synthesized peptide derived from human RREB1.
Isotype:	IgG
Specificity:	RREB1 Antibody detects endogenous levels of total RREB1 protein.
Purification:	The antibody was purified from rabbit antiserum by affinity-chromatography using immunogen.
Purity:	> 95 %

Target Details

Target:	RREB1
Alternative Name:	RREB1 (RREB1 Products)
Background:	Synonyms: RREB-1, Raf-responsive zinc finger protein LZ321, Zinc finger motif-enhancer

Target Details

binding-protein 1, Zep-1, Finger protein in nuclear bodies, Raf-responsive zinc finger protein LZ321, Ras-responsive element-binding protein 1, RREB1, Zep-1, zinc-finger motif-en
NCBI Gene Symbol: RREB1

Molecular Weight: 181 kDa

Gene ID: 6239

OMIM: 602209

UniProt: [Q92766](#)

Application Details

Application Notes: IHC: 1:50~1:100 ELISA: 1:20000

Comment: Unigene-Number: Hs.298248 (NCBI Gene Symbol: RREB1)

Restrictions: For Research Use only

Handling

Format: Liquid

Concentration: 1 mg/mL

Buffer: phosphate buffered saline (without Mg²⁺ and Ca²⁺), pH 7.4, 150 mM NaCl, 0.02 % sodium azide and 50 % glycerol.

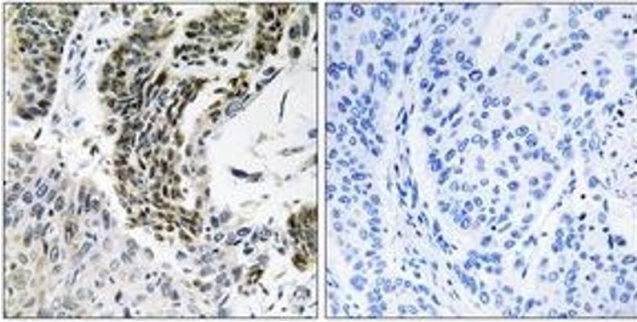
Preservative: Sodium azide

Precaution of Use: This product contains sodium azide: a POISONOUS AND HAZARDOUS SUBSTANCE which should be handled by trained staff only.

Storage: -20 °C

Storage Comment: Stable at -20°C for at least 1 year.

Expiry Date: 12 months



Immunohistochemistry

Image 1. Immunohistochemistry analysis of paraffin-embedded human lung carcinoma tissue, using RREB1 Antibody. The picture on the right is treated with the synthesized peptide.