



[Go to Product page](#)

Datasheet for ABIN1535285
anti-RGS1 antibody (AA 118-167)

2 Images

Overview

Quantity:	100 µg
Target:	RGS1
Binding Specificity:	AA 118-167
Reactivity:	Human, Mouse, Rat
Host:	Rabbit
Clonality:	Polyclonal
Conjugate:	This RGS1 antibody is un-conjugated
Application:	Western Blotting (WB), ELISA, Immunohistochemistry (IHC)

Product Details

Immunogen:	The antiserum was produced against synthesized peptide derived from human RGS1.
Isotype:	IgG
Specificity:	RGS1 Antibody detects endogenous levels of total RGS1 protein.
Purification:	The antibody was purified from rabbit antiserum by affinity-chromatography using immunogen.
Purity:	> 95 %

Target Details

Target:	RGS1
Alternative Name:	RGS1 (RGS1 Products)
Background:	Synonyms: RGS1, Early response protein 1R20, B-cell activation protein BL34

Target Details

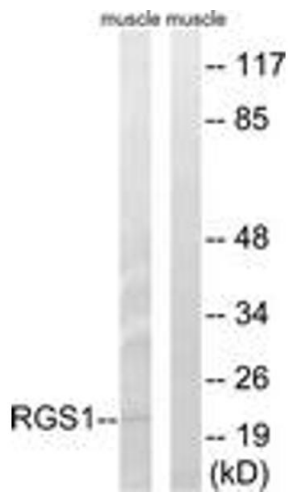
	NCBI Gene Symbol: RGS1
Molecular Weight:	22 kDa
Gene ID:	5996
OMIM:	600323
UniProt:	Q08116
Pathways:	MAPK Signaling , Myometrial Relaxation and Contraction , Regulation of G-Protein Coupled Receptor Protein Signaling , CXCR4-mediated Signaling Events

Application Details

Application Notes:	WB: 1:500~1:1000 IHC: 1:50~1:100 ELISA: 1:20000
Comment:	Unigene-Number: Hs.75256 (NCBI Gene Symbol: RGS1)
Restrictions:	For Research Use only

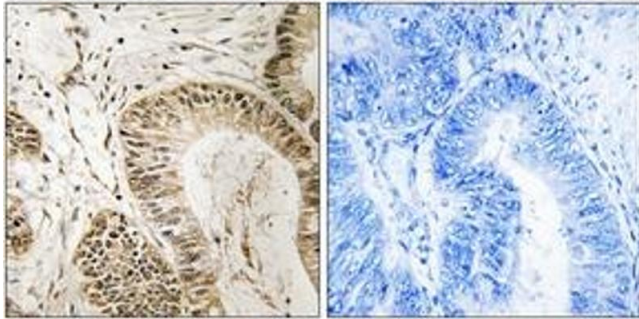
Handling

Format:	Liquid
Concentration:	1 mg/mL
Buffer:	phosphate buffered saline (without Mg ²⁺ and Ca ²⁺), pH 7.4, 150 mM NaCl, 0.02 % sodium azide and 50 % glycerol.
Preservative:	Sodium azide
Precaution of Use:	This product contains sodium azide: a POISONOUS AND HAZARDOUS SUBSTANCE which should be handled by trained staff only.
Storage:	-20 °C
Storage Comment:	Stable at -20°C for at least 1 year.
Expiry Date:	12 months



Western Blotting

Image 1. Western blot analysis of extracts from mouse muscle cells, using RGS1 Antibody. The lane on the right is treated with the synthesized peptide.



Immunohistochemistry

Image 2. Immunohistochemistry analysis of paraffin-embedded human colon carcinoma tissue, using RGS1 Antibody. The picture on the right is treated with the synthesized peptide.