

Datasheet for ABIN1535301
anti-ARHGEF7 antibody (AA 311-360)



[Go to Product page](#)

1 Image

Overview

Quantity:	100 µL
Target:	ARHGEF7
Binding Specificity:	AA 311-360
Reactivity:	Human, Rat, Mouse
Host:	Rabbit
Clonality:	Polyclonal
Conjugate:	This ARHGEF7 antibody is un-conjugated
Application:	Western Blotting (WB), ELISA

Product Details

Immunogen:	The antiserum was produced against synthesized peptide derived from human ARHGEF7.
Isotype:	IgG
Specificity:	ARHGEF7 Antibody detects endogenous levels of total ARHGEF7 protein.
Purification:	The antibody was purified from rabbit antiserum by affinity-chromatography using immunogen.
Purity:	> 95 %

Target Details

Target:	ARHGEF7
Alternative Name:	ARHGEF7 (ARHGEF7 Products)
Background:	Synonyms: PAK-interacting exchange factor beta, Beta-Pix, COOL-1, p85

Target Details

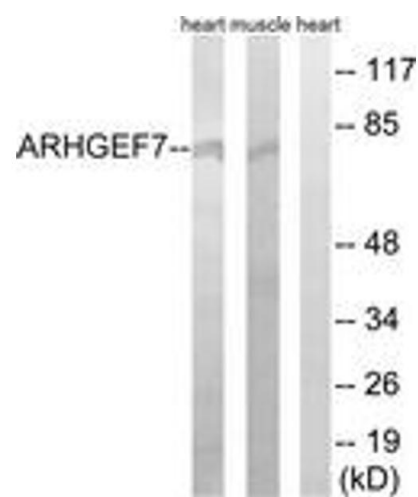
	NCBI Gene Symbol: ARHGEF7
Molecular Weight:	90 kDa
Gene ID:	8874
OMIM:	605477
UniProt:	Q14155
Pathways:	EGFR Signaling Pathway , Neurotrophin Signaling Pathway , EGFR Downregulation

Application Details

Application Notes:	WB: 1:500~1:1000 ELISA: 1:5000
Comment:	Unigene-Number: Hs.508738 (NCBI Gene Symbol: ARHGEF7)
Restrictions:	For Research Use only

Handling

Format:	Liquid
Concentration:	1 mg/mL
Buffer:	phosphate buffered saline (without Mg ²⁺ and Ca ²⁺), pH 7.4, 150 mM NaCl, 0.02 % sodium azide and 50 % glycerol.
Preservative:	Sodium azide
Precaution of Use:	This product contains sodium azide: a POISONOUS AND HAZARDOUS SUBSTANCE which should be handled by trained staff only.
Storage:	-20 °C
Storage Comment:	Stable at -20°C for at least 1 year.
Expiry Date:	12 months



Western Blotting

Image 1. Western blot analysis of extracts from rat muscle/rat heart cells, using ARHGEF7 Antibody. The lane on the right is treated with the synthesized peptide.