

Datasheet for ABIN1535311  
**anti-MRRF antibody (AA 181-230)**

## 2 Images

[Go to Product page](#)

## Overview

Quantity:	100 µg
Target:	MRRF
Binding Specificity:	AA 181-230
Reactivity:	Human, Mouse, Rat
Host:	Rabbit
Clonality:	Polyclonal
Conjugate:	This MRRF antibody is un-conjugated
Application:	Western Blotting (WB), ELISA, Immunohistochemistry (IHC)

## Product Details

Immunogen:	The antiserum was produced against synthesized peptide derived from human MRRF.
Isotype:	IgG
Specificity:	MRRF Antibody detects endogenous levels of total MRRF protein.
Purification:	The antibody was purified from rabbit antiserum by affinity-chromatography using immunogen.
Purity:	> 95 %

## Target Details

Target:	MRRF
Alternative Name:	MRRF ( <a href="#">MRRF Products</a> )
Background:	Synonyms: Ribosome-recycling factor, mitochondrial, RRF, Ribosome-releasing factor

## Target Details

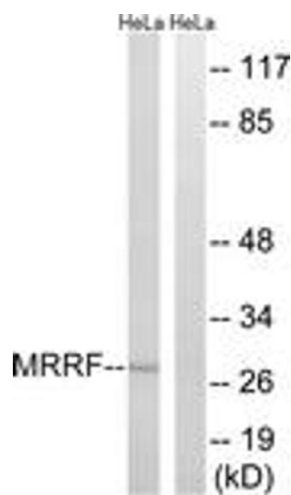
	mitochondrial NCBI Gene Symbol: MRRF
Molecular Weight:	29 kDa
Gene ID:	92399
OMIM:	604602
UniProt:	<a href="#">Q96E11</a>
Pathways:	<a href="#">Ribonucleoprotein Complex Subunit Organization</a>

## Application Details

Application Notes:	WB: 1:500~1:1000 IHC: 1:50~1:100 ELISA: 1:20000
Comment:	Unigene-Number: Hs.368011 (NCBI Gene Symbol: MRRF)
Restrictions:	For Research Use only

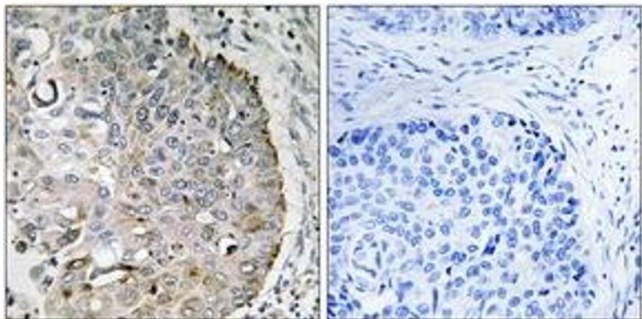
## Handling

Format:	Liquid
Concentration:	1 mg/mL
Buffer:	phosphate buffered saline (without Mg <sup>2+</sup> and Ca <sup>2+</sup> ), pH 7.4, 150 mM NaCl, 0.02 % sodium azide and 50 % glycerol.
Preservative:	Sodium azide
Precaution of Use:	This product contains sodium azide: a POISONOUS AND HAZARDOUS SUBSTANCE which should be handled by trained staff only.
Storage:	-20 °C
Storage Comment:	Stable at -20°C for at least 1 year.
Expiry Date:	12 months



### Western Blotting

**Image 1.** Western blot analysis of extracts from HeLa cells, using MRRF Antibody. The lane on the right is treated with the synthesized peptide.



### Immunohistochemistry

**Image 2.** Immunohistochemistry analysis of paraffin-embedded human lung carcinoma tissue, using MRRF Antibody. The picture on the right is treated with the synthesized peptide.