

Datasheet for ABIN1535313
anti-RTCD1 antibody (AA 317-366)[Go to Product page](#)

2 Images

Overview

Quantity:	100 µg
Target:	RTCD1
Binding Specificity:	AA 317-366
Reactivity:	Human
Host:	Rabbit
Clonality:	Polyclonal
Conjugate:	This RTCD1 antibody is un-conjugated
Application:	Western Blotting (WB), ELISA, Immunohistochemistry (IHC)

Product Details

Immunogen:	The antiserum was produced against synthesized peptide derived from human RTCD1.
Isotype:	IgG
Specificity:	RTCD1 Antibody detects endogenous levels of total RTCD1 protein.
Purification:	The antibody was purified from rabbit antiserum by affinity-chromatography using immunogen.
Purity:	> 95 %

Target Details

Target:	RTCD1
Alternative Name:	RTCD1 (RTCD1 Products)
Background:	Synonyms: RNA 3'-terminal phosphate cyclase, RNA-3'-phosphate cyclase, RNA cyclase, RNA

Target Details

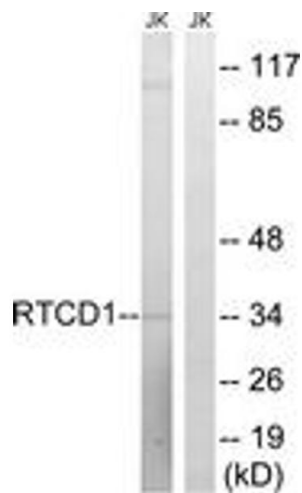
	terminal phosphate cyclase domain-containing protein 1, RTC domain-containing protein 1, RTCD1 NCBI Gene Symbol: RTC1
Molecular Weight:	39 kDa
Gene ID:	8634
OMIM:	611286
UniProt:	O00442

Application Details

Application Notes:	WB: 1:500~1:1000 IHC: 1:50~1:100 ELISA: 1:1000
Comment:	Unigene-Number: Hs.484222 (NCBI Gene Symbol: RTC1)
Restrictions:	For Research Use only

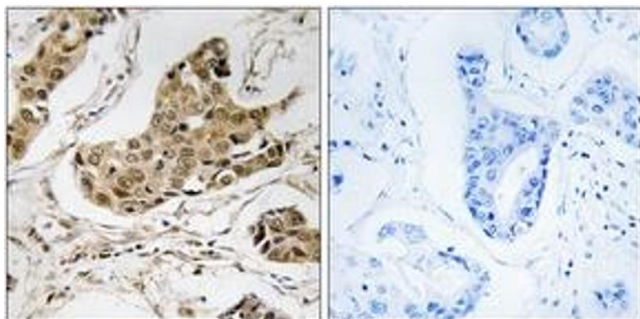
Handling

Format:	Liquid
Concentration:	1 mg/mL
Buffer:	phosphate buffered saline (without Mg ²⁺ and Ca ²⁺), pH 7.4, 150 mM NaCl, 0.02 % sodium azide and 50 % glycerol.
Preservative:	Sodium azide
Precaution of Use:	This product contains sodium azide: a POISONOUS AND HAZARDOUS SUBSTANCE which should be handled by trained staff only.
Storage:	-20 °C
Storage Comment:	Stable at -20°C for at least 1 year.
Expiry Date:	12 months



Western Blotting

Image 1. Western blot analysis of extracts from Jurkat cells, using RTCD1 Antibody. The lane on the right is treated with the synthesized peptide.



Immunohistochemistry

Image 2. Immunohistochemistry analysis of paraffin-embedded human breast carcinoma tissue, using RTCD1 Antibody. The picture on the right is treated with the synthesized peptide.