



[Go to Product page](#)

Datasheet for ABIN1535322
anti-SCARF2 antibody (AA 677-726)

1 Image

Overview

Quantity:	100 µL
Target:	SCARF2
Binding Specificity:	AA 677-726
Reactivity:	Human
Host:	Rabbit
Clonality:	Polyclonal
Conjugate:	This SCARF2 antibody is un-conjugated
Application:	ELISA, Immunohistochemistry (IHC)

Product Details

Immunogen:	The antiserum was produced against synthesized peptide derived from human SCARF2.
Isotype:	IgG
Specificity:	SCARF2 Antibody detects endogenous levels of total SCARF2 protein.
Purification:	The antibody was purified from rabbit antiserum by affinity-chromatography using immunogen.
Purity:	> 95 %

Target Details

Target:	SCARF2
Alternative Name:	SCARF2 (SCARF2 Products)
Background:	Synonyms: Scavenger receptor class F member 2 Scavenger receptor expressed by endothelial

Target Details

cells 2 protein, SREC-II, SRECRP-1 SCARF2
NCBI Gene Symbol: SCARF2

Molecular Weight: 91 kDa

Gene ID: 91179

UniProt: [Q96GP6](#)

Application Details

Application Notes: IHC: 1:50~1:100 ELISA: 1:40000

Comment: Unigene-Number: Hs.474251 (NCBI Gene Symbol: SCARF2)

Restrictions: For Research Use only

Handling

Format: Liquid

Concentration: 1 mg/mL

Buffer: phosphate buffered saline (without Mg²⁺ and Ca²⁺), pH 7.4, 150 mM NaCl, 0.02 % sodium azide and 50 % glycerol.

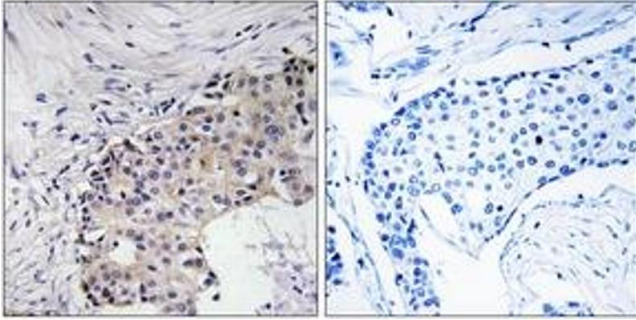
Preservative: Sodium azide

Precaution of Use: This product contains sodium azide: a POISONOUS AND HAZARDOUS SUBSTANCE which should be handled by trained staff only.

Storage: -20 °C

Storage Comment: Stable at -20°C for at least 1 year.

Expiry Date: 12 months



Immunohistochemistry

Image 1. Immunohistochemistry analysis of paraffin-embedded human breast carcinoma, using SCARF2 Antibody. The picture on the right is treated with the synthesized peptide.