

Datasheet for ABIN1535333
anti-STK36 antibody (AA 387-436)[Go to Product page](#)

2 Images

Overview

Quantity:	100 µg
Target:	STK36
Binding Specificity:	AA 387-436
Reactivity:	Human, Mouse
Host:	Rabbit
Clonality:	Polyclonal
Conjugate:	This STK36 antibody is un-conjugated
Application:	ELISA, Western Blotting (WB), Immunohistochemistry (IHC)

Product Details

Immunogen:	The antiserum was produced against synthesized peptide derived from human STK36.
Isotype:	IgG
Specificity:	STK36 Antibody detects endogenous levels of total STK36 protein.
Purification:	The antibody was purified from rabbit antiserum by affinity-chromatography using immunogen.
Purity:	> 95 %

Target Details

Target:	STK36
Alternative Name:	STK36 (STK36 Products)
Background:	Synonyms: Serine/threonine-protein kinase 36 Fused homolog STK36

Target Details

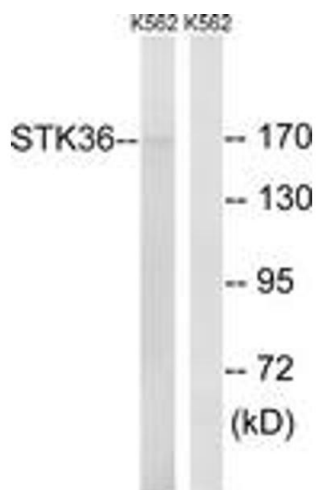
	NCBI Gene Symbol: STK36
Molecular Weight:	143 kDa
Gene ID:	27148
OMIM:	607652
UniProt:	Q9NRP7

Application Details

Application Notes:	WB: 1:500~1:1000 IHC: 1:50~1:100 ELISA: 1:1000
Comment:	Unigene-Number: Hs.471404, Hs.712986 (NCBI Gene Symbol: STK36)
Restrictions:	For Research Use only

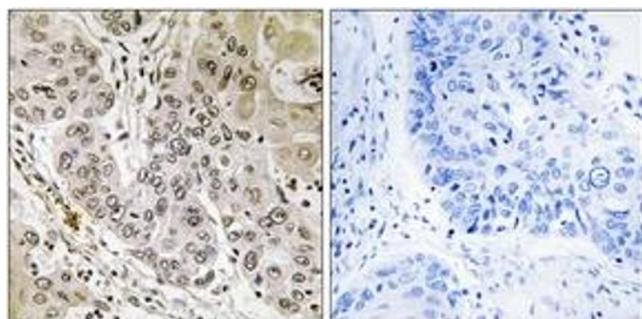
Handling

Format:	Liquid
Concentration:	1 mg/mL
Buffer:	phosphate buffered saline (without Mg ²⁺ and Ca ²⁺), pH 7.4, 150 mM NaCl, 0.02 % sodium azide and 50 % glycerol.
Preservative:	Sodium azide
Precaution of Use:	This product contains sodium azide: a POISONOUS AND HAZARDOUS SUBSTANCE which should be handled by trained staff only.
Storage:	-20 °C
Storage Comment:	Stable at -20°C for at least 1 year.
Expiry Date:	12 months



Western Blotting

Image 1. Western blot analysis of extracts from K562 cells, using STK36 Antibody. The lane on the right is treated with the synthesized peptide.



Immunohistochemistry

Image 2. Immunohistochemistry analysis of paraffin-embedded human lung carcinoma tissue, using STK36 Antibody. The picture on the right is treated with the synthesized peptide.