



[Go to Product page](#)

Datasheet for ABIN1535345

anti-TAO Kinase 1 (TAOK1) (AA 431-480) antibody

2 Images

Overview

Quantity:	100 µg
Target:	TAO Kinase 1 (TAOK1)
Binding Specificity:	AA 431-480
Reactivity:	Human, Rat, Mouse
Host:	Rabbit
Clonality:	Polyclonal
Conjugate:	Un-conjugated
Application:	Western Blotting (WB), ELISA, Immunohistochemistry (IHC)

Product Details

Immunogen:	The antiserum was produced against synthesized peptide derived from human TAOK1.
Isotype:	IgG
Specificity:	TAOK1 Antibody detects endogenous levels of total TAOK1 protein.
Purification:	The antibody was purified from rabbit antiserum by affinity-chromatography using immunogen.
Purity:	> 95 %

Target Details

Target:	TAO Kinase 1 (TAOK1)
Alternative Name:	TAOK1 (TAOK1 Products)
Background:	Synonyms: Thousand and one amino acid protein 1, STE20-like kinase PSK2, Kinase from

Target Details

chicken homolog B, hKFC-B
NCBI Gene Symbol: TAOK1

Molecular Weight: 116 kDa

Gene ID: 57551

OMIM: 610266

UniProt: [Q7L7X3](#)

Application Details

Application Notes: WB: 1:500~1:1000 IHC: 1:50~1:100 ELISA: 1:5000

Comment: Unigene-Number: Hs.631758 (NCBI Gene Symbol: TAOK1)

Restrictions: For Research Use only

Handling

Format: Liquid

Concentration: 1 mg/mL

Buffer: phosphate buffered saline (without Mg²⁺ and Ca²⁺), pH 7.4, 150 mM NaCl, 0.02 % sodium azide and 50 % glycerol.

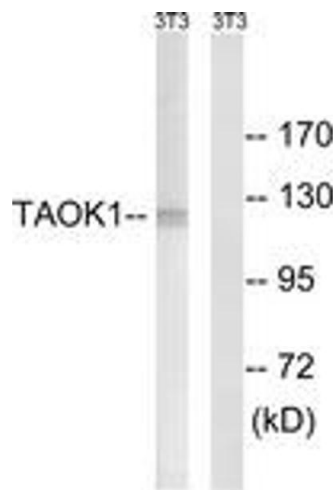
Preservative: Sodium azide

Precaution of Use: This product contains sodium azide: a POISONOUS AND HAZARDOUS SUBSTANCE which should be handled by trained staff only.

Storage: -20 °C

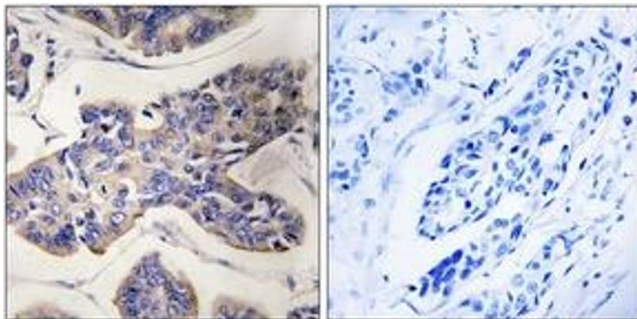
Storage Comment: Stable at -20°C for at least 1 year.

Expiry Date: 12 months



Western Blotting

Image 1. Western blot analysis of extracts from NIH-3T3 cells, using TAOK1 Antibody. The lane on the right is treated with the synthesized peptide.



Immunohistochemistry

Image 2. Immunohistochemistry analysis of paraffin-embedded human breast carcinoma tissue, using TAOK1 Antibody. The picture on the right is treated with the synthesized peptide.