

Datasheet for ABIN1535351
anti-PPP2R1B antibody (AA 552-601)

2 Images

[Go to Product page](#)

Overview

Quantity:	100 µg
Target:	PPP2R1B
Binding Specificity:	AA 552-601
Reactivity:	Human, Mouse, Rat
Host:	Rabbit
Clonality:	Polyclonal
Conjugate:	This PPP2R1B antibody is un-conjugated
Application:	Western Blotting (WB), Immunohistochemistry (IHC), ELISA

Product Details

Immunogen:	The antiserum was produced against synthesized peptide derived from human PPP2R1B.
Isotype:	IgG
Specificity:	PPP2R1B Antibody detects endogenous levels of total PPP2R1B protein.
Purification:	The antibody was purified from rabbit antiserum by affinity-chromatography using immunogen.
Purity:	> 95 %

Target Details

Target:	PPP2R1B
Alternative Name:	PPP2R1B (PPP2R1B Products)
Background:	Synonyms: Serine/threonine-protein phosphatase 2A 65 kDa regulatory subunit A beta isoform,

Target Details

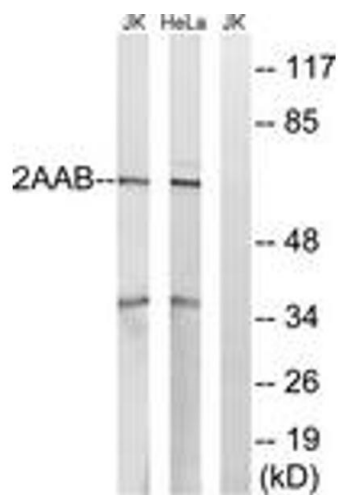
	PP2A subunit A isoform PR65-beta, PP2A subunit A isoform R1-beta , PPP2R1B NCBI Gene Symbol: PPP2R1B
Molecular Weight:	66 kDa
Gene ID:	5519
OMIM:	603113
UniProt:	P30154
Pathways:	PI3K-Akt Signaling , Mitotic G1-G1/S Phases , Hepatitis C , Toll-Like Receptors Cascades

Application Details

Application Notes:	WB: 1:500~1:1000 IHC: 1:50~1:100 ELISA: 1:40000
Comment:	Unigene-Number: Hs.584790 (NCBI Gene Symbol: PPP2R1B)
Restrictions:	For Research Use only

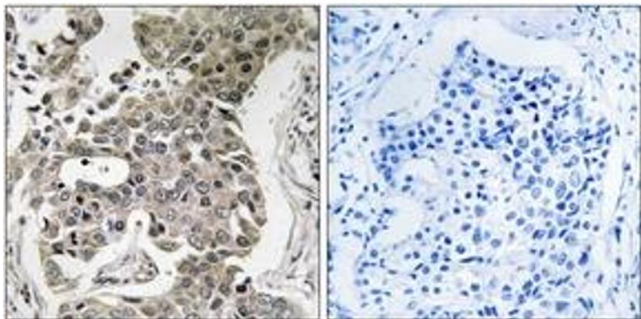
Handling

Format:	Liquid
Concentration:	1 mg/mL
Buffer:	phosphate buffered saline (without Mg ²⁺ and Ca ²⁺), pH 7.4, 150 mM NaCl, 0.02 % sodium azide and 50 % glycerol.
Preservative:	Sodium azide
Precaution of Use:	This product contains sodium azide: a POISONOUS AND HAZARDOUS SUBSTANCE which should be handled by trained staff only.
Storage:	-20 °C
Storage Comment:	Stable at -20°C for at least 1 year.
Expiry Date:	12 months



Western Blotting

Image 1. Western blot analysis of extracts from HeLa/Jurkat cells, using PPP2R1B Antibody. The lane on the right is treated with the synthesized peptide.



Immunohistochemistry

Image 2. Immunohistochemistry analysis of paraffin-embedded human breast carcinoma tissue, using PPP2R1B Antibody. The picture on the right is treated with the synthesized peptide.