



[Go to Product page](#)

Datasheet for ABIN1535359
anti-SESN1 antibody (AA 271-320)

2 Images

Overview

Quantity:	100 µL
Target:	SESN1
Binding Specificity:	AA 271-320
Reactivity:	Human, Mouse
Host:	Rabbit
Clonality:	Polyclonal
Conjugate:	This SESN1 antibody is un-conjugated
Application:	Western Blotting (WB), ELISA, Immunohistochemistry (IHC)

Product Details

Immunogen:	The antiserum was produced against synthesized peptide derived from human SESN1.
Isotype:	IgG
Specificity:	SESN1 Antibody detects endogenous levels of total SESN1 protein.
Purification:	The antibody was purified from rabbit antiserum by affinity-chromatography using immunogen.
Purity:	> 95 %

Target Details

Target:	SESN1
Alternative Name:	SESN1 (SESN1 Products)
Background:	Synonyms: Sestrin-1, p53-regulated protein PA26, SESN1

Target Details

NCBI Gene Symbol: SESN1

Molecular Weight: 56 kDa

Gene ID: 27244

OMIM: 606103

UniProt: [Q9Y6P5](#)

Application Details

Application Notes: WB: 1:500~1:1000 IHC: 1:50~1:100 ELISA: 1:20000

Comment: Unigene-Number: Hs.591336 (NCBI Gene Symbol: SESN1)

Restrictions: For Research Use only

Handling

Format: Liquid

Concentration: 1 mg/mL

Buffer: phosphate buffered saline (without Mg²⁺ and Ca²⁺), pH 7.4, 150 mM NaCl, 0.02 % sodium azide and 50 % glycerol.

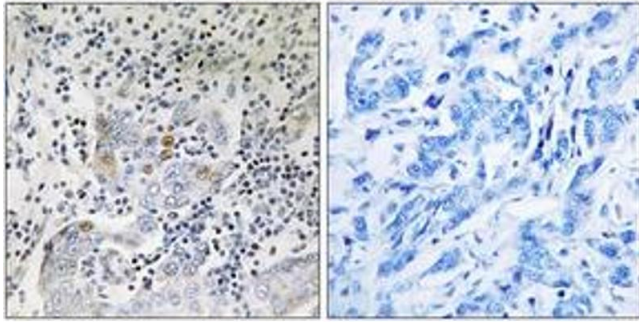
Preservative: Sodium azide

Precaution of Use: This product contains sodium azide: a POISONOUS AND HAZARDOUS SUBSTANCE which should be handled by trained staff only.

Storage: -20 °C

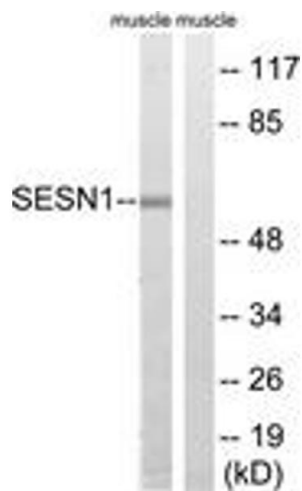
Storage Comment: Stable at -20°C for at least 1 year.

Expiry Date: 12 months



Immunohistochemistry

Image 1. Immunohistochemistry analysis of paraffin-embedded human breast carcinoma tissue, using SESN1 Antibody. The picture on the right is treated with the synthesized peptide.



Western Blotting

Image 2. Western blot analysis of extracts from rat muscle cells, using SESN1 Antibody. The lane on the right is treated with the synthesized peptide.