

Datasheet for ABIN1535360  
**anti-SHD antibody (AA 141-190)**[Go to Product page](#)

## 1 Image

## Overview

Quantity:	100 µg
Target:	SHD
Binding Specificity:	AA 141-190
Reactivity:	Human
Host:	Rabbit
Clonality:	Polyclonal
Conjugate:	This SHD antibody is un-conjugated
Application:	ELISA, Western Blotting (WB)

## Product Details

Immunogen:	The antiserum was produced against synthesized peptide derived from human SHD.
Isotype:	IgG
Specificity:	SHD Antibody detects endogenous levels of total SHD protein.
Purification:	The antibody was purified from rabbit antiserum by affinity-chromatography using immunogen.
Purity:	> 95 %

## Target Details

Target:	SHD
Alternative Name:	SHD ( <a href="#">SHD Products</a> )
Background:	Synonyms: SFRS2-interacting protein Splicing factor, arginine/serine-rich 2-interacting protein,

## Target Details

SC35-interacting protein 1, CTD-associated SR protein 11, Splicing regulatory protein 129, SRp129, Renal carcinoma antigen NY-REN-40 SFRS2IP  
NCBI Gene Symbol: SHD

Molecular Weight: 128 kDa

Gene ID: 56961

OMIM: 610481

UniProt: [Q96IW2](#)

Pathways: [Response to Water Deprivation](#)

## Application Details

Application Notes: WB: 1:500~1:1000 ELISA: 1:40000

Comment: Unigene-Number: Hs.7423 (NCBI Gene Symbol: SHD)

Restrictions: For Research Use only

## Handling

Format: Liquid

Concentration: 1 mg/mL

Buffer: phosphate buffered saline (without Mg<sup>2+</sup> and Ca<sup>2+</sup>), pH 7.4, 150 mM NaCl, 0.02 % sodium azide and 50 % glycerol.

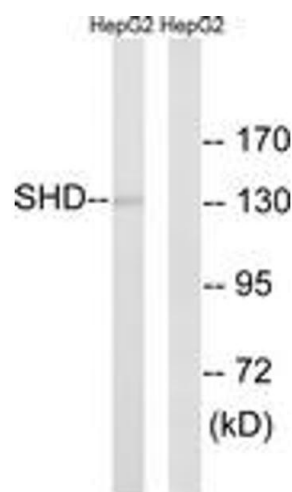
Preservative: Sodium azide

Precaution of Use: This product contains sodium azide: a POISONOUS AND HAZARDOUS SUBSTANCE which should be handled by trained staff only.

Storage: -20 °C

Storage Comment: Stable at -20°C for at least 1 year.

Expiry Date: 12 months



Western Blotting

**Image 1.** Western blot analysis of extracts from HepG2 cells, using SHD Antibody. The lane on the right is treated with the synthesized peptide.