



[Go to Product page](#)

Datasheet for ABIN1535361
anti-SH2D1B antibody (AA 71-120)

1 Image

Overview

Quantity:	100 µL
Target:	SH2D1B
Binding Specificity:	AA 71-120
Reactivity:	Human
Host:	Rabbit
Clonality:	Polyclonal
Conjugate:	This SH2D1B antibody is un-conjugated
Application:	ELISA, Immunohistochemistry (IHC)

Product Details

Immunogen:	The antiserum was produced against synthesized peptide derived from human SH2D1B.
Isotype:	IgG
Specificity:	SH2D1B Antibody detects endogenous levels of total SH2D1B protein.
Purification:	The antibody was purified from rabbit antiserum by affinity-chromatography using immunogen.
Purity:	> 95 %

Target Details

Target:	SH2D1B
Alternative Name:	SH2D1B (SH2D1B Products)
Background:	Synonyms: SH2 domain-containing protein 1B, EWS/FLI1-activated transcript 2, EAT-2, SH2D1B

Target Details

NCBI Gene Symbol: SH2D1B

Molecular Weight: 15 kDa

Gene ID: 117157

OMIM: 608510

UniProt: [O14796](#)

Pathways: [Regulation of Leukocyte Mediated Immunity, Positive Regulation of Immune Effector Process](#)

Application Details

Application Notes: IHC: 1:50~1:100 ELISA: 1:40000

Comment: Unigene-Number: Hs.350581 (NCBI Gene Symbol: SH2D1B)

Restrictions: For Research Use only

Handling

Format: Liquid

Concentration: 1 mg/mL

Buffer: phosphate buffered saline (without Mg²⁺ and Ca²⁺), pH 7.4, 150 mM NaCl, 0.02 % sodium azide and 50 % glycerol.

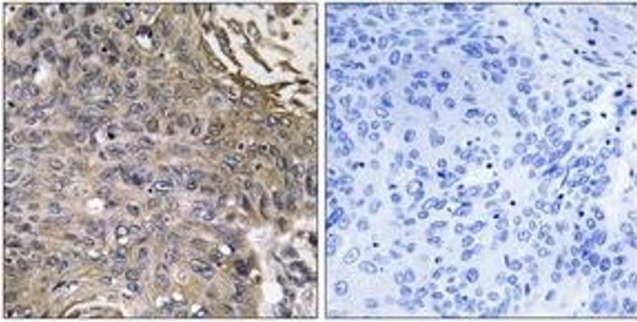
Preservative: Sodium azide

Precaution of Use: This product contains sodium azide: a POISONOUS AND HAZARDOUS SUBSTANCE which should be handled by trained staff only.

Storage: -20 °C

Storage Comment: Stable at -20°C for at least 1 year.

Expiry Date: 12 months



Immunohistochemistry

Image 1. Immunohistochemistry analysis of paraffin-embedded human lung carcinoma, using SH2D1B Antibody. The picture on the right is treated with the synthesized peptide.