

Datasheet for ABIN1535362

anti-SH2D2A antibody (AA 211-260)[Go to Product page](#)**1** Image

Overview

Quantity:	100 µL
Target:	SH2D2A
Binding Specificity:	AA 211-260
Reactivity:	Human
Host:	Rabbit
Clonality:	Polyclonal
Conjugate:	This SH2D2A antibody is un-conjugated
Application:	Western Blotting (WB), ELISA

Product Details

Immunogen:	The antiserum was produced against synthesized peptide derived from human SH2D2A.
Isotype:	IgG
Specificity:	SH2D2A Antibody detects endogenous levels of total SH2D2A protein.
Purification:	The antibody was purified from rabbit antiserum by affinity-chromatography using immunogen.
Purity:	> 95 %

Target Details

Target:	SH2D2A
Alternative Name:	SH2D2A (SH2D2A Products)
Background:	Synonyms: SH2 domain-containing protein 2A T cell-specific adapter protein, TSA _d , VEGF

Target Details

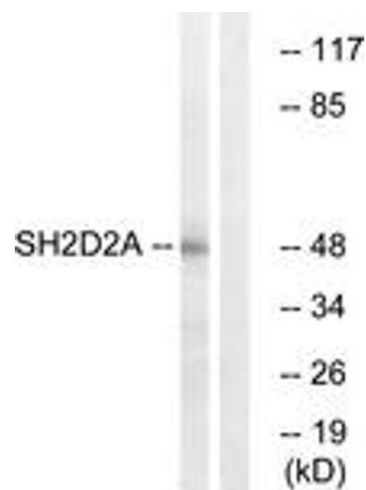
	receptor-associated protein, SH2 domain-containing adapter protein SH2D2A NCBI Gene Symbol: SH2D2A
Molecular Weight:	42 kDa
Gene ID:	9047
OMIM:	604514
UniProt:	Q9NP31
Pathways:	Signaling Events mediated by VEGFR1 and VEGFR2, VEGF Signaling

Application Details

Application Notes:	WB: 1:500~1:1000 ELISA: 1:10000
Comment:	Unigene-Number: Hs.103527 (NCBI Gene Symbol: SH2D2A)
Restrictions:	For Research Use only

Handling

Format:	Liquid
Concentration:	1 mg/mL
Buffer:	phosphate buffered saline (without Mg ²⁺ and Ca ²⁺), pH 7.4, 150 mM NaCl, 0.02 % sodium azide and 50 % glycerol.
Preservative:	Sodium azide
Precaution of Use:	This product contains sodium azide: a POISONOUS AND HAZARDOUS SUBSTANCE which should be handled by trained staff only.
Storage:	-20 °C
Storage Comment:	Stable at -20°C for at least 1 year.
Expiry Date:	12 months



Western Blotting

Image 1. Western blot analysis of extracts from HepG2 cells, using SH2D2A Antibody. The lane on the right is treated with the synthesized peptide.