



[Go to Product page](#)

Datasheet for ABIN1535367
anti-SH3GLB2 antibody (AA 131-180)

2 Images

Overview

Quantity:	100 µg
Target:	SH3GLB2
Binding Specificity:	AA 131-180
Reactivity:	Human, Mouse, Rat
Host:	Rabbit
Clonality:	Polyclonal
Conjugate:	This SH3GLB2 antibody is un-conjugated
Application:	Western Blotting (WB), Immunohistochemistry (IHC), ELISA

Product Details

Immunogen:	The antiserum was produced against synthesized peptide derived from human SH3GLB2.
Isotype:	IgG
Specificity:	SH3GLB2 Antibody detects endogenous levels of total SH3GLB2 protein.
Purification:	The antibody was purified from rabbit antiserum by affinity-chromatography using immunogen.
Purity:	> 95 %

Target Details

Target:	SH3GLB2
Alternative Name:	SH3GLB2 (SH3GLB2 Products)
Background:	Synonyms: Endophilin-B2, SH3 domain-containing GRB2-like protein B2, SH3GLB2, KIAA1848,

Target Details

PP578,
NCBI Gene Symbol: SH3GLB2

Molecular Weight: 43 kDa

Gene ID: 56904

OMIM: 609288

UniProt: [Q9NR46](#)

Application Details

Application Notes: WB: 1:500~1:1000 IHC: 1:50~1:100 ELISA: 1:40000

Comment: Unigene-Number: Hs.460238 (NCBI Gene Symbol: SH3GLB2)

Restrictions: For Research Use only

Handling

Format: Liquid

Concentration: 1 mg/mL

Buffer: phosphate buffered saline (without Mg²⁺ and Ca²⁺), pH 7.4, 150 mM NaCl, 0.02 % sodium azide and 50 % glycerol.

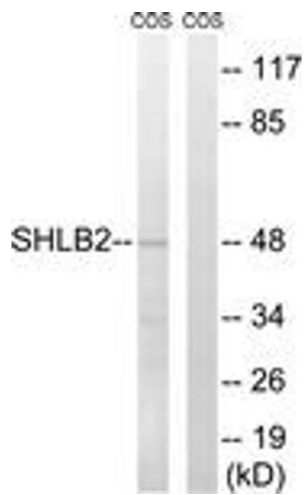
Preservative: Sodium azide

Precaution of Use: This product contains sodium azide: a POISONOUS AND HAZARDOUS SUBSTANCE which should be handled by trained staff only.

Storage: -20 °C

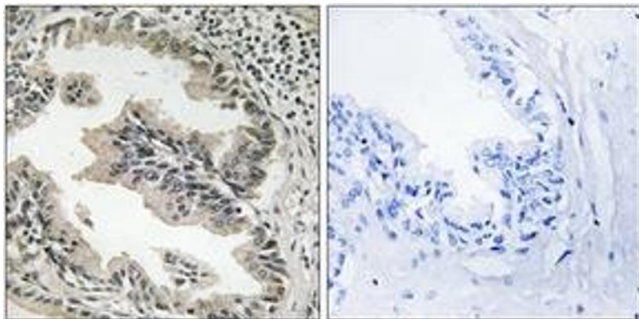
Storage Comment: Stable at -20°C for at least 1 year.

Expiry Date: 12 months



Western Blotting

Image 1. Western blot analysis of extracts from COS7 cells, using SH3GLB2 Antibody. The lane on the right is treated with the synthesized peptide.



Immunohistochemistry

Image 2. Immunohistochemistry analysis of paraffin-embedded human prostate carcinoma tissue, using SH3GLB2 Antibody. The picture on the right is treated with the synthesized peptide.