

Datasheet for ABIN1535369  
**anti-SHC2 antibody (AA 261-310)**



[Go to Product page](#)

1 Image

## Overview

Quantity:	100 µL
Target:	SHC2
Binding Specificity:	AA 261-310
Reactivity:	Human, Rat
Host:	Rabbit
Clonality:	Polyclonal
Conjugate:	This SHC2 antibody is un-conjugated
Application:	Western Blotting (WB), ELISA

## Product Details

Immunogen:	The antiserum was produced against synthesized peptide derived from human SHC2.
Isotype:	IgG
Specificity:	SHC2 Antibody detects endogenous levels of total SHC2 protein.
Purification:	The antibody was purified from rabbit antiserum by affinity-chromatography using immunogen.
Purity:	> 95 %

## Target Details

Target:	SHC2
Alternative Name:	SHC2 ( <a href="#">SHC2 Products</a> )
Background:	Synonyms: SH2 domain protein C2, Src homology 2 domain-containing-transforming protein

## Target Details

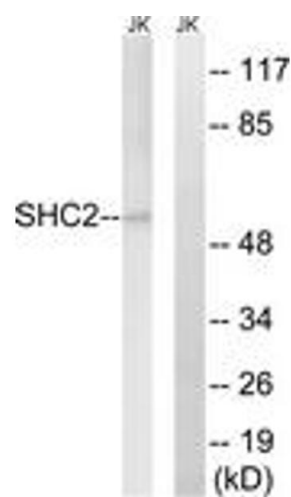
	C2, Protein Sck NCBI Gene Symbol: SHC2
Molecular Weight:	58 kDa
Gene ID:	25759
OMIM:	605217
UniProt:	<a href="#">P98077</a>
Pathways:	<a href="#">RTK Signaling</a> , <a href="#">Neurotrophin Signaling Pathway</a> , <a href="#">Signaling Events mediated by VEGFR1 and VEGFR2</a> , <a href="#">VEGFR1 Specific Signals</a> , <a href="#">VEGF Signaling</a>

## Application Details

Application Notes:	WB: 1:500~1:1000 ELISA: 1:10000
Comment:	Unigene-Number: Hs.30965 (NCBI Gene Symbol: SHC2)
Restrictions:	For Research Use only

## Handling

Format:	Liquid
Concentration:	1 mg/mL
Buffer:	phosphate buffered saline (without Mg2+ and Ca2+), pH 7.4, 150 mM NaCl, 0.02 % sodium azide and 50 % glycerol.
Preservative:	Sodium azide
Precaution of Use:	This product contains sodium azide: a POISONOUS AND HAZARDOUS SUBSTANCE which should be handled by trained staff only.
Storage:	-20 °C
Storage Comment:	Stable at -20°C for at least 1 year.
Expiry Date:	12 months



Western Blotting

**Image 1.** Western blot analysis of extracts from Jurkat cells, using SHC2 Antibody. The lane on the right is treated with the synthesized peptide.