

Datasheet for ABIN1535374  
**anti-TAUT antibody (AA 561-610)**



[Go to Product page](#)

1 Image

## Overview

Quantity:	100 µL
Target:	TAUT
Binding Specificity:	AA 561-610
Reactivity:	Human, Rat, Mouse
Host:	Rabbit
Clonality:	Polyclonal
Conjugate:	This TAUT antibody is un-conjugated
Application:	Immunohistochemistry (IHC), ELISA

## Product Details

Immunogen:	The antiserum was produced against synthesized peptide derived from human SLC6A6.
Isotype:	IgG
Specificity:	SLC6A6 Antibody detects endogenous levels of total SLC6A6 protein.
Purification:	The antibody was purified from rabbit antiserum by affinity-chromatography using immunogen.
Purity:	> 95 %

## Target Details

Target:	TAUT
Alternative Name:	SLC6A6 ( <a href="#">TAUT Products</a> )
Background:	Synonyms: Sodium- and chloride-dependent taurine transporter, SLC6A6, Solute carrier family 6

### Target Details

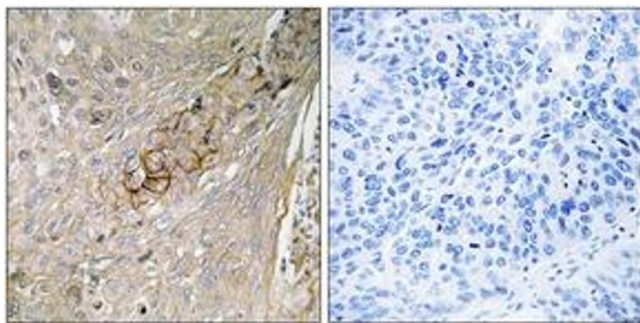
	member 6
	NCBI Gene Symbol: SLC6A6
Molecular Weight:	69 kDa
Gene ID:	6533
OMIM:	186854
UniProt:	<a href="#">P31641</a>

### Application Details

Application Notes:	IHC: 1:50~1:100 ELISA: 1:10000
Comment:	Unigene-Number: Hs.529488 (NCBI Gene Symbol: SLC6A6)
Restrictions:	For Research Use only

### Handling

Format:	Liquid
Concentration:	1 mg/mL
Buffer:	phosphate buffered saline (without Mg2+ and Ca2+), pH 7.4, 150 mM NaCl, 0.02 % sodium azide and 50 % glycerol.
Preservative:	Sodium azide
Precaution of Use:	This product contains sodium azide: a POISONOUS AND HAZARDOUS SUBSTANCE which should be handled by trained staff only.
Storage:	-20 °C
Storage Comment:	Stable at -20°C for at least 1 year.
Expiry Date:	12 months



#### Immunohistochemistry

**Image 1.** Immunohistochemistry analysis of paraffin-embedded human lung carcinoma tissue, using SLC6A6 Antibody. The picture on the right is treated with the synthesized peptide.