

Datasheet for ABIN1535380
anti-SLC5A2 antibody (AA 101-150)[Go to Product page](#)

1 Image

Overview

Quantity:	100 µg
Target:	SLC5A2
Binding Specificity:	AA 101-150
Reactivity:	Human, Rat, Mouse
Host:	Rabbit
Clonality:	Polyclonal
Conjugate:	This SLC5A2 antibody is un-conjugated
Application:	ELISA, Western Blotting (WB)

Product Details

Immunogen:	The antiserum was produced against synthesized peptide derived from human SLC5A2.
Isotype:	IgG
Specificity:	SLC5A2 Antibody detects endogenous levels of total SLC5A2 protein.
Purification:	The antibody was purified from rabbit antiserum by affinity-chromatography using immunogen.
Purity:	> 95 %

Target Details

Target:	SLC5A2
Alternative Name:	SLC5A2 (SLC5A2 Products)
Background:	Synonyms: Na(+)/glucose cotransporter 2, Low affinity sodium-glucose cotransporter, Solute

Target Details

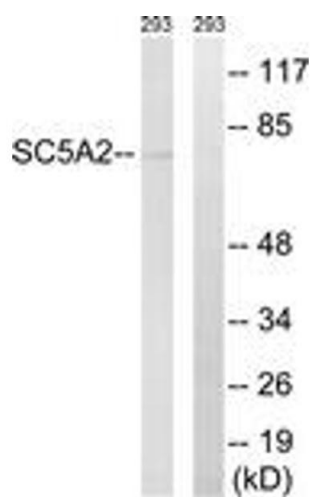
	carrier family 5 member 2 NCBI Gene Symbol: SLC5A2
Molecular Weight:	72 kDa
Gene ID:	6524
OMIM:	182381
UniProt:	P31639

Application Details

Application Notes:	WB: 1:500~1:1000 ELISA: 1:40000
Comment:	Unigene-Number: Hs.709195 (NCBI Gene Symbol: SLC5A2)
Restrictions:	For Research Use only

Handling

Format:	Liquid
Concentration:	1 mg/mL
Buffer:	phosphate buffered saline (without Mg ²⁺ and Ca ²⁺), pH 7.4, 150 mM NaCl, 0.02 % sodium azide and 50 % glycerol.
Preservative:	Sodium azide
Precaution of Use:	This product contains sodium azide: a POISONOUS AND HAZARDOUS SUBSTANCE which should be handled by trained staff only.
Storage:	-20 °C
Storage Comment:	Stable at -20°C for at least 1 year.
Expiry Date:	12 months



Western Blotting

Image 1. Western blot analysis of extracts from 293 cells, using SLC5A2 Antibody. The lane on the right is treated with the synthesized peptide.