

Datasheet for ABIN1535382
anti-NHE8 antibody (AA 451-500)[Go to Product page](#)

1 Image

Overview

Quantity:	100 µg
Target:	NHE8 (SLC9A8)
Binding Specificity:	AA 451-500
Reactivity:	Human, Mouse, Rat
Host:	Rabbit
Clonality:	Polyclonal
Conjugate:	This NHE8 antibody is un-conjugated
Application:	Western Blotting (WB), ELISA

Product Details

Immunogen:	The antiserum was produced against synthesized peptide derived from human SLC9A8.
Isotype:	IgG
Specificity:	SLC9A8 Antibody detects endogenous levels of total SLC9A8 protein.
Purification:	The antibody was purified from rabbit antiserum by affinity-chromatography using immunogen.
Purity:	> 95 %

Target Details

Target:	NHE8 (SLC9A8)
Alternative Name:	SLC9A8 (SLC9A8 Products)
Background:	Synonyms: Sodium/hydrogen exchanger 8, Na(+)/H(+) exchanger 8, NHE-8, Solute carrier

Target Details

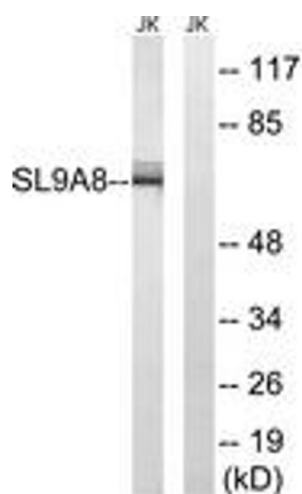
	family 9 member 8, SLC9A8, KIAA0939, NHE8, NCBI Gene Symbol: SLC9A8
Molecular Weight:	64 kDa
Gene ID:	23315
OMIM:	612730
UniProt:	Q9Y2E8
Pathways:	Proton Transport

Application Details

Application Notes:	WB: 1:500~1:1000 ELISA: 1:40000
Comment:	Unigene-Number: Hs.444202 (NCBI Gene Symbol: SLC9A8)
Restrictions:	For Research Use only

Handling

Format:	Liquid
Concentration:	1 mg/mL
Buffer:	phosphate buffered saline (without Mg ²⁺ and Ca ²⁺), pH 7.4, 150 mM NaCl, 0.02 % sodium azide and 50 % glycerol.
Preservative:	Sodium azide
Precaution of Use:	This product contains sodium azide: a POISONOUS AND HAZARDOUS SUBSTANCE which should be handled by trained staff only.
Storage:	-20 °C
Storage Comment:	Stable at -20°C for at least 1 year.
Expiry Date:	12 months



Western Blotting

Image 1. Western blot analysis of extracts from Jurkat cells, using SLC9A8 Antibody. The lane on the right is treated with the synthesized peptide.