



[Go to Product page](#)

Datasheet for ABIN1535386

anti-SLC24A4 antibody (AA 328-377)

1 Image

Overview

Quantity:	100 µg
Target:	SLC24A4 (Slc24a4)
Binding Specificity:	AA 328-377
Reactivity:	Human, Mouse, Rat
Host:	Rabbit
Clonality:	Polyclonal
Conjugate:	This SLC24A4 antibody is un-conjugated
Application:	Western Blotting (WB), ELISA

Product Details

Immunogen:	The antiserum was produced against synthesized peptide derived from human SLC24A4.
Isotype:	IgG
Specificity:	SLC24A4 Antibody detects endogenous levels of total SLC24A4 protein.
Purification:	The antibody was purified from rabbit antiserum by affinity-chromatography using immunogen.
Purity:	> 95 %

Target Details

Target:	SLC24A4 (Slc24a4)
Alternative Name:	SLC24A4 (Slc24a4 Products)
Background:	Synonyms: Sodium/potassium/calcium exchanger 4, Na(+)/K(+)/Ca(2+)-exchange protein 4,

Target Details

Solute carrier family 24 member 4, SLC24A4, NCKX4,
NCBI Gene Symbol: SLC24A4

Molecular Weight: 66 kDa

Gene ID: 123041

OMIM: 609840

UniProt: [Q8NFF2](#)

Application Details

Application Notes: WB: 1:500~1:1000 ELISA: 1:40000

Comment: Unigene-Number: Hs.510281 (NCBI Gene Symbol: SLC24A4)

Restrictions: For Research Use only

Handling

Format: Liquid

Concentration: 1 mg/mL

Buffer: phosphate buffered saline (without Mg²⁺ and Ca²⁺), pH 7.4, 150 mM NaCl, 0.02 % sodium azide and 50 % glycerol.

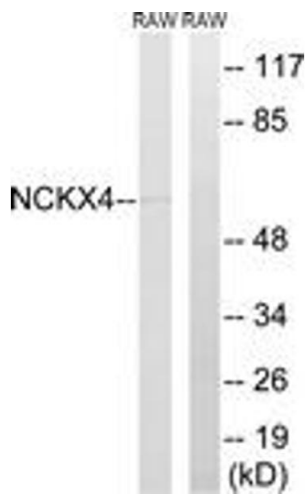
Preservative: Sodium azide

Precaution of Use: This product contains sodium azide: a POISONOUS AND HAZARDOUS SUBSTANCE which should be handled by trained staff only.

Storage: -20 °C

Storage Comment: Stable at -20°C for at least 1 year.

Expiry Date: 12 months



Western Blotting

Image 1. Western blot analysis of extracts from RAW264.7 cells, using SLC24A4 Antibody. The lane on the right is treated with the synthesized peptide.