

Datasheet for ABIN1535389
anti-SLC17A2 antibody (AA 213-262)[Go to Product page](#)

1 Image

Overview

Quantity:	100 µg
Target:	SLC17A2
Binding Specificity:	AA 213-262
Reactivity:	Human, Mouse
Host:	Rabbit
Clonality:	Polyclonal
Conjugate:	This SLC17A2 antibody is un-conjugated
Application:	Western Blotting (WB), ELISA

Product Details

Immunogen:	The antiserum was produced against synthesized peptide derived from human SLC17A2.
Isotype:	IgG
Specificity:	SLC17A2 Antibody detects endogenous levels of total SLC17A2 protein.
Purification:	The antibody was purified from rabbit antiserum by affinity-chromatography using immunogen.
Purity:	> 95 %

Target Details

Target:	SLC17A2
Alternative Name:	SLC17A2 (SLC17A2 Products)
Background:	Synonyms: Sodium-dependent phosphate transport protein 3, Sodium/phosphate cotransporter

Target Details

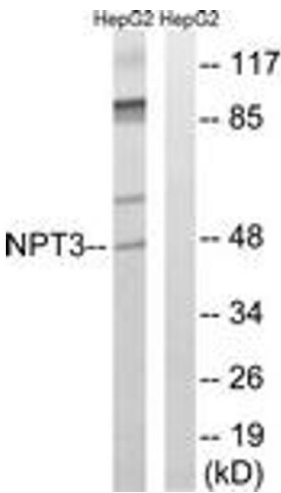
	3, Na(+)/PI cotransporter 3, Solute carrier family 17 member 2, SLC17A2, NPT3, NCBI Gene Symbol: SLC17A2
Molecular Weight:	47 kDa
Gene ID:	10246
OMIM:	611049
UniProt:	O00624

Application Details

Application Notes:	WB: 1:500~1:1000 ELISA: 1:40000
Comment:	Unigene-Number: Hs.591802 (NCBI Gene Symbol: SLC17A2)
Restrictions:	For Research Use only

Handling

Format:	Liquid
Concentration:	1 mg/mL
Buffer:	phosphate buffered saline (without Mg ²⁺ and Ca ²⁺), pH 7.4, 150 mM NaCl, 0.02 % sodium azide and 50 % glycerol.
Preservative:	Sodium azide
Precaution of Use:	This product contains sodium azide: a POISONOUS AND HAZARDOUS SUBSTANCE which should be handled by trained staff only.
Storage:	-20 °C
Storage Comment:	Stable at -20°C for at least 1 year.
Expiry Date:	12 months



Western Blotting

Image 1. Western blot analysis of extracts from HepG2 cells, using SLC17A2 Antibody. The lane on the right is treated with the synthesized peptide.