

Datasheet for ABIN1535391
anti-SLC01A2 antibody (AA 251-300)[Go to Product page](#)

1 Image

Overview

Quantity:	100 µg
Target:	SLC01A2
Binding Specificity:	AA 251-300
Reactivity:	Human
Host:	Rabbit
Clonality:	Polyclonal
Conjugate:	This SLC01A2 antibody is un-conjugated
Application:	Western Blotting (WB), ELISA

Product Details

Immunogen:	The antiserum was produced against synthesized peptide derived from human SLC01A2.
Isotype:	IgG
Specificity:	SLC01A2 Antibody detects endogenous levels of total SLC01A2 protein.
Purification:	The antibody was purified from rabbit antiserum by affinity-chromatography using immunogen.
Purity:	> 95 %

Target Details

Target:	SLC01A2
Alternative Name:	SLC01A2 (SLC01A2 Products)
Background:	Synonyms: Solute carrier organic anion transporter family member 1A2, Solute carrier family 21

Target Details

member 3, Sodium-independent organic anion transporter, Organic anion-transporting polypeptide 1, OATP1, OATP-A, SLC01A2, OATP, SLC21A3
NCBI Gene Symbol: SLC01A2

Molecular Weight: 74 kDa

Gene ID: 6579

OMIM: 602883

UniProt: [P46721](#)

Application Details

Application Notes: WB: 1:500~1:1000 ELISA: 1:20000

Comment: Unigene-Number: Hs.46440 (NCBI Gene Symbol: SLC01A2)

Restrictions: For Research Use only

Handling

Format: Liquid

Concentration: 1 mg/mL

Buffer: phosphate buffered saline (without Mg²⁺ and Ca²⁺), pH 7.4, 150 mM NaCl, 0.02 % sodium azide and 50 % glycerol.

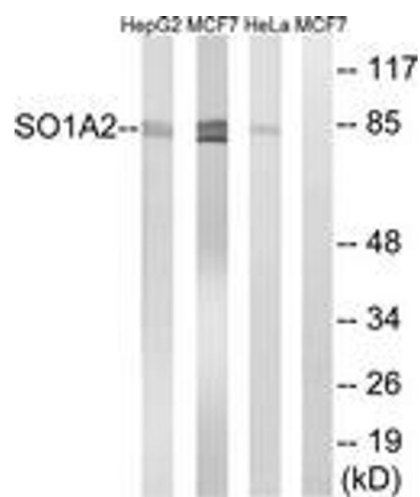
Preservative: Sodium azide

Precaution of Use: This product contains sodium azide: a POISONOUS AND HAZARDOUS SUBSTANCE which should be handled by trained staff only.

Storage: -20 °C

Storage Comment: Stable at -20°C for at least 1 year.

Expiry Date: 12 months



Western Blotting

Image 1. Western blot analysis of extracts from HeLa/MCF-7/HepG2 cells, using SLC01A2 Antibody. The lane on the right is treated with the synthesized peptide.