



[Go to Product page](#)

Datasheet for ABIN1535393

anti-SPTbN5 antibody (AA 481-530)

1 Image

Overview

Quantity:	100 µg
Target:	SPTbN5
Binding Specificity:	AA 481-530
Reactivity:	Human
Host:	Rabbit
Clonality:	Polyclonal
Conjugate:	This SPTbN5 antibody is un-conjugated
Application:	ELISA, Immunohistochemistry (IHC)

Product Details

Immunogen:	The antiserum was produced against synthesized peptide derived from human SPTBN5.
Isotype:	IgG
Specificity:	SPTBN5 Antibody detects endogenous levels of total SPTBN5 protein.
Purification:	The antibody was purified from rabbit antiserum by affinity-chromatography using immunogen.
Purity:	> 95 %

Target Details

Target:	SPTbN5
Alternative Name:	SPTBN5 (SPTbN5 Products)
Background:	Synonyms: Spectrin beta chain brain 4, Spectrin non-erythroid beta chain 4, Beta-V spectrin,

Target Details

BSPECV, SPTBN5, SPTBN4,
NCBI Gene Symbol: SPTBN5

Molecular Weight: 416 kDa

Gene ID: 51332

OMIM: 605916

UniProt: [Q9NRC6](#)

Application Details

Application Notes: IHC: 1:50~1:100 ELISA: 1:10000

Comment: Unigene-Number: Hs.709819 (NCBI Gene Symbol: SPTBN5)

Restrictions: For Research Use only

Handling

Format: Liquid

Concentration: 1 mg/mL

Buffer: phosphate buffered saline (without Mg²⁺ and Ca²⁺), pH 7.4, 150 mM NaCl, 0.02 % sodium azide and 50 % glycerol.

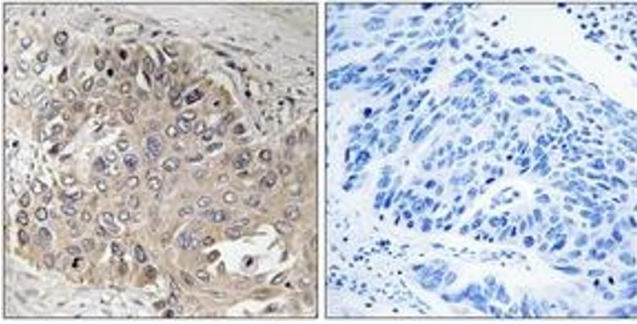
Preservative: Sodium azide

Precaution of Use: This product contains sodium azide: a POISONOUS AND HAZARDOUS SUBSTANCE which should be handled by trained staff only.

Storage: -20 °C

Storage Comment: Stable at -20°C for at least 1 year.

Expiry Date: 12 months



Immunohistochemistry

Image 1. Immunohistochemistry analysis of paraffin-embedded human lung carcinoma, using SPTBN5 Antibody. The picture on the right is treated with the synthesized peptide.