

Datasheet for ABIN1535394
anti-SRSF11 antibody (AA 211-260)



[Go to Product page](#)

1 Image

Overview

Quantity:	100 µL
Target:	SRSF11
Binding Specificity:	AA 211-260
Reactivity:	Human, Mouse
Host:	Rabbit
Clonality:	Polyclonal
Conjugate:	This SRSF11 antibody is un-conjugated
Application:	Western Blotting (WB), ELISA

Product Details

Immunogen:	The antiserum was produced against synthesized peptide derived from human SFRS11.
Isotype:	IgG
Specificity:	SFRS11 Antibody detects endogenous levels of total SFRS11 protein.
Purification:	The antibody was purified from rabbit antiserum by affinity-chromatography using immunogen.
Purity:	> 95 %

Target Details

Target:	SRSF11
Alternative Name:	SFRS11 (SRSF11 Products)
Background:	Synonyms: Splicing factor arginine/serine-rich 11, Arginine-rich 54 kDa nuclear protein, p54,

Target Details

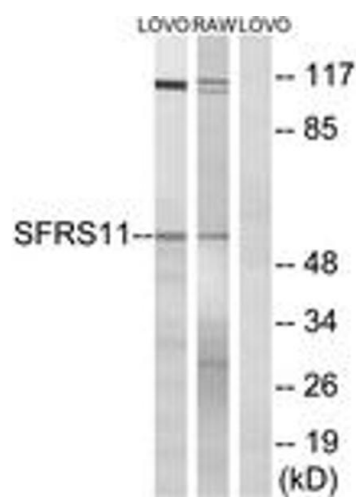
	SFRS11
	NCBI Gene Symbol: SFRS11
Molecular Weight:	53 kDa
Gene ID:	9295
OMIM:	602010
UniProt:	Q05519

Application Details

Application Notes:	WB: 1:500~1:1000 ELISA: 1:10000
Comment:	Unigene-Number: Hs.479693 (NCBI Gene Symbol: SFRS11)
Restrictions:	For Research Use only

Handling

Format:	Liquid
Concentration:	1 mg/mL
Buffer:	phosphate buffered saline (without Mg2+ and Ca2+), pH 7.4, 150 mM NaCl, 0.02 % sodium azide and 50 % glycerol.
Preservative:	Sodium azide
Precaution of Use:	This product contains sodium azide: a POISONOUS AND HAZARDOUS SUBSTANCE which should be handled by trained staff only.
Storage:	-20 °C
Storage Comment:	Stable at -20°C for at least 1 year.
Expiry Date:	12 months



Western Blotting

Image 1. Western blot analysis of extracts from LOVO/RAW264.7 cells, using SFRS11 Antibody. The lane on the right is treated with the synthesized peptide.