

Datasheet for ABIN1535395
anti-SCAF4 antibody (AA 601-650)[Go to Product page](#)

1 Image

Overview

Quantity:	100 µg
Target:	SCAF4
Binding Specificity:	AA 601-650
Reactivity:	Human, Rat, Mouse
Host:	Rabbit
Clonality:	Polyclonal
Conjugate:	This SCAF4 antibody is un-conjugated
Application:	Western Blotting (WB), ELISA

Product Details

Immunogen:	The antiserum was produced against synthesized peptide derived from human SFRS15.
Isotype:	IgG
Specificity:	SFRS15 Antibody detects endogenous levels of total SFRS15 protein.
Purification:	The antibody was purified from rabbit antiserum by affinity-chromatography using immunogen.
Purity:	> 95 %

Target Details

Target:	SCAF4
Alternative Name:	SFRS15 (SCAF4 Products)
Background:	Synonyms: Splicing factor, arginine/serine-rich 15, CTD-binding SR-like protein RA4, SFRS15,

Target Details

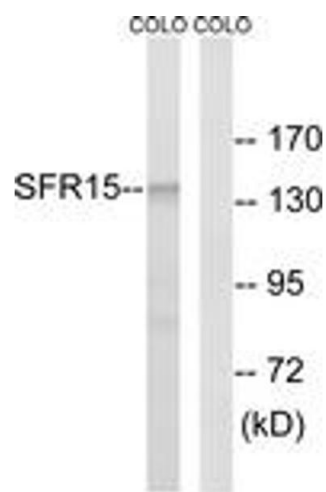
	KIAA1172
	NCBI Gene Symbol: SFRS15
Molecular Weight:	125 kDa
Gene ID:	57466
UniProt:	O95104

Application Details

Application Notes:	WB: 1:500~1:1000 ELISA: 1:40000
Comment:	Unigene-Number: Hs.17255 (NCBI Gene Symbol: SFRS15)
Restrictions:	For Research Use only

Handling

Format:	Liquid
Concentration:	1 mg/mL
Buffer:	phosphate buffered saline (without Mg ²⁺ and Ca ²⁺), pH 7.4, 150 mM NaCl, 0.02 % sodium azide and 50 % glycerol.
Preservative:	Sodium azide
Precaution of Use:	This product contains sodium azide: a POISONOUS AND HAZARDOUS SUBSTANCE which should be handled by trained staff only.
Storage:	-20 °C
Storage Comment:	Stable at -20°C for at least 1 year.
Expiry Date:	12 months



Western Blotting

Image 1. Western blot analysis of extracts from COLO cells, using SFRS15 Antibody. The lane on the right is treated with the synthesized peptide.