

Datasheet for ABIN1535406
anti-CCT6A antibody (AA 171-220)[Go to Product page](#)

1 Image

Overview

| | |
|----------------------|--------------------------------------|
| Quantity: | 100 µg |
| Target: | CCT6A |
| Binding Specificity: | AA 171-220 |
| Reactivity: | Human, Mouse, Rat |
| Host: | Rabbit |
| Clonality: | Polyclonal |
| Conjugate: | This CCT6A antibody is un-conjugated |
| Application: | ELISA, Immunohistochemistry (IHC) |

Product Details

| | |
|---------------|---|
| Immunogen: | The antiserum was produced against synthesized peptide derived from human CCT6A. |
| Isotype: | IgG |
| Specificity: | CCT6A Antibody detects endogenous levels of total CCT6A protein. |
| Purification: | The antibody was purified from rabbit antiserum by affinity-chromatography using immunogen. |
| Purity: | > 95 % |

Target Details

| | |
|-------------------|--|
| Target: | CCT6A |
| Alternative Name: | CCT6A (CCT6A Products) |
| Background: | Synonyms: T-complex protein 1 subunit zeta, TCP-1-zeta, CCT-zeta, CCT-zeta-1, Tcp20, HTR3, |

Target Details

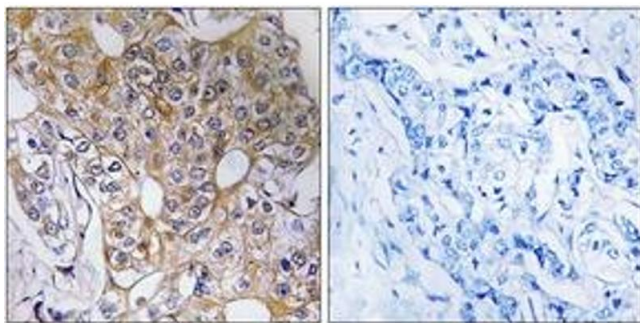
| | |
|-------------------|---|
| | Acute morphine dependence-related protein 2, CCT6A, CCT6, CCTZ NCBI Gene Symbol: CCT6A |
| Molecular Weight: | 58 kDa |
| Gene ID: | 908 |
| OMIM: | 104613 |
| UniProt: | P40227 |

Application Details

| | |
|--------------------|--|
| Application Notes: | IHC: 1:50~1:100 ELISA: 1:10000 |
| Comment: | Unigene-Number: Hs.82916 (NCBI Gene Symbol: CCT6A) |
| Restrictions: | For Research Use only |

Handling

| | |
|--------------------|---|
| Format: | Liquid |
| Concentration: | 1 mg/mL |
| Buffer: | phosphate buffered saline (without Mg ²⁺ and Ca ²⁺), pH 7.4, 150 mM NaCl, 0.02 % sodium azide and 50 % glycerol. |
| Preservative: | Sodium azide |
| Precaution of Use: | This product contains sodium azide: a POISONOUS AND HAZARDOUS SUBSTANCE which should be handled by trained staff only. |
| Storage: | -20 °C |
| Storage Comment: | Stable at -20°C for at least 1 year. |
| Expiry Date: | 12 months |



Immunohistochemistry

Image 1. Immunohistochemistry analysis of paraffin-embedded human breast carcinoma tissue, using CCT6A Antibody. The picture on the right is treated with the synthesized peptide.