



[Go to Product page](#)

Datasheet for ABIN1535416
anti-TCEAL3/5/6 antibody (AA 141-190)

1 Image

Overview

Quantity:	100 µg
Target:	TCEAL3/5/6
Binding Specificity:	AA 141-190
Reactivity:	Human
Host:	Rabbit
Clonality:	Polyclonal
Conjugate:	This TCEAL3/5/6 antibody is un-conjugated
Application:	ELISA, Immunohistochemistry (IHC)

Product Details

Immunogen:	The antiserum was produced against synthesized peptide derived from human TCEAL3.
Isotype:	IgG
Specificity:	TCEAL3/5/6 Antibody detects endogenous levels of total TCEAL3/5/6 protein.
Purification:	The antibody was purified from rabbit antiserum by affinity-chromatography using immunogen.
Purity:	> 95 %

Target Details

Target:	TCEAL3/5/6
Alternative Name:	TCEAL3/5/6 (TCEAL3/5/6 Products)
Background:	Synonyms: Transcription elongation factor A protein-like 3, TCEA-like protein 3, Transcription

Target Details

elongation factor S-II protein-like 3, TCEAL3, MSTP072

NCBI Gene Symbol: TCEAL3/5/6

Molecular Weight: 22 kDa

Gene ID: 85012

UniProt: [Q969E4](#), [Q5H9L2](#), [Q6IPX3](#)

Application Details

Application Notes: IHC: 1:50~1:100 ELISA: 1:40000

Comment: Unigene-Number: Hs.311776 (NCBI Gene Symbol: TCEAL3)

Restrictions: For Research Use only

Handling

Format: Liquid

Concentration: 1 mg/mL

Buffer: phosphate buffered saline (without Mg²⁺ and Ca²⁺), pH 7.4, 150 mM NaCl, 0.02 % sodium azide and 50 % glycerol.

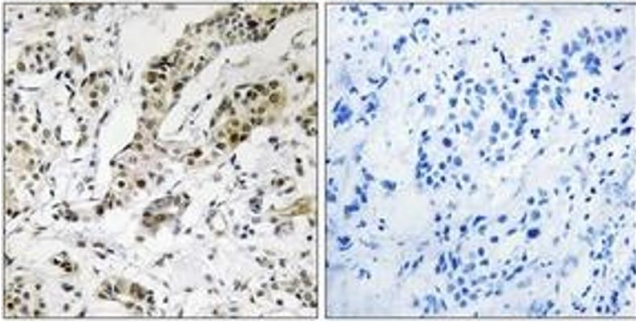
Preservative: Sodium azide

Precaution of Use: This product contains sodium azide: a POISONOUS AND HAZARDOUS SUBSTANCE which should be handled by trained staff only.

Storage: -20 °C

Storage Comment: Stable at -20°C for at least 1 year.

Expiry Date: 12 months



Immunohistochemistry

Image 1. Immunohistochemistry analysis of paraffin-embedded human breast carcinoma, using TCEAL3/5/6 Antibody. The picture on the right is treated with the synthesized peptide.