



[Go to Product page](#)

Datasheet for ABIN1535420
anti-BTF3L4 antibody (AA 94-143)

1 Image

Overview

| | |
|----------------------|---------------------------------------|
| Quantity: | 100 µg |
| Target: | BTF3L4 |
| Binding Specificity: | AA 94-143 |
| Reactivity: | Human, Mouse |
| Host: | Rabbit |
| Clonality: | Polyclonal |
| Conjugate: | This BTF3L4 antibody is un-conjugated |
| Application: | ELISA, Immunohistochemistry (IHC) |

Product Details

| | |
|---------------|---|
| Immunogen: | The antiserum was produced against synthesized peptide derived from human BTF3L4. |
| Isotype: | IgG |
| Specificity: | BTF3L4 Antibody detects endogenous levels of total BTF3L4 protein. |
| Purification: | The antibody was purified from rabbit antiserum by affinity-chromatography using immunogen. |
| Purity: | > 95 % |

Target Details

| | |
|-------------------|---|
| Target: | BTF3L4 |
| Alternative Name: | BTF3L4 (BTF3L4 Products) |
| Background: | Synonyms: Transcription factor BTF3 homolog 4, Basic transcription factor 3-like 4, BTF3L4, |

Target Details

NCBI Gene Symbol: BTF3L4

Molecular Weight: 17 kDa

Gene ID: 91408

UniProt: [Q96K17](#)

Application Details

Application Notes: IHC: 1:50~1:100 ELISA: 1:40000

Comment: Unigene-Number: Hs.429839 (NCBI Gene Symbol: BTF3L4)

Restrictions: For Research Use only

Handling

Format: Liquid

Concentration: 1 mg/mL

Buffer: phosphate buffered saline (without Mg²⁺ and Ca²⁺), pH 7.4, 150 mM NaCl, 0.02 % sodium azide and 50 % glycerol.

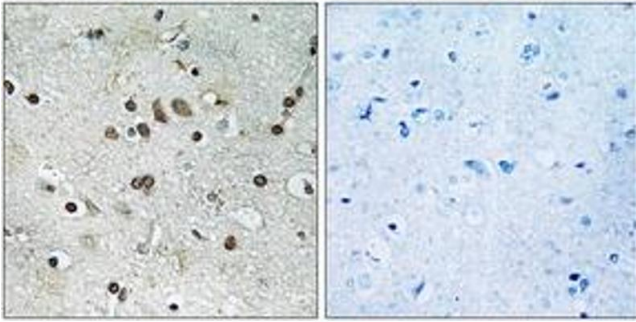
Preservative: Sodium azide

Precaution of Use: This product contains sodium azide: a POISONOUS AND HAZARDOUS SUBSTANCE which should be handled by trained staff only.

Storage: -20 °C

Storage Comment: Stable at -20°C for at least 1 year.

Expiry Date: 12 months



Immunohistochemistry

Image 1. Immunohistochemistry analysis of paraffin-embedded human brain tissue, using BTF3L4 Antibody. The picture on the right is treated with the synthesized peptide.