

Datasheet for ABIN1535421  
**anti-RFX3 antibody (AA 641-690)**

## 2 Images

[Go to Product page](#)

## Overview

Quantity:	100 µg
Target:	RFX3
Binding Specificity:	AA 641-690
Reactivity:	Human, Mouse
Host:	Rabbit
Clonality:	Polyclonal
Conjugate:	This RFX3 antibody is un-conjugated
Application:	Western Blotting (WB), ELISA, Immunohistochemistry (IHC)

## Product Details

Immunogen:	The antiserum was produced against synthesized peptide derived from human RFX3.
Isotype:	IgG
Specificity:	RFX3 Antibody detects endogenous levels of total RFX3 protein.
Purification:	The antibody was purified from rabbit antiserum by affinity-chromatography using immunogen.
Purity:	> 95 %

## Target Details

Target:	RFX3
Alternative Name:	RFX3 ( <a href="#">RFX3 Products</a> )
Background:	Synonyms: Transcription factor RFX3, Regulatory factor X 3, RFX3

## Target Details

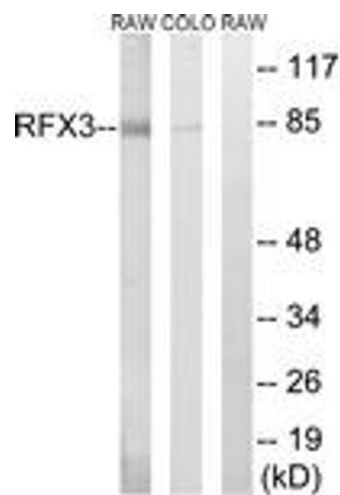
	NCBI Gene Symbol: RFX3
Molecular Weight:	83 kDa
Gene ID:	5991
OMIM:	601337
UniProt:	<a href="#">P48380</a>

## Application Details

Application Notes:	WB: 1:500~1:1000 IHC: 1:50~1:100 ELISA: 1:40000
Comment:	Unigene-Number: Hs.136829 (NCBI Gene Symbol: RFX3)
Restrictions:	For Research Use only

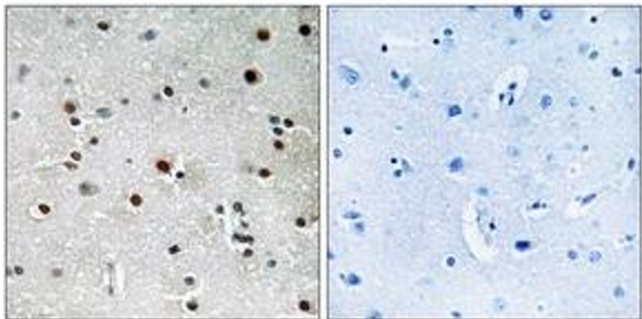
## Handling

Format:	Liquid
Concentration:	1 mg/mL
Buffer:	phosphate buffered saline (without Mg <sup>2+</sup> and Ca <sup>2+</sup> ), pH 7.4, 150 mM NaCl, 0.02 % sodium azide and 50 % glycerol.
Preservative:	Sodium azide
Precaution of Use:	This product contains sodium azide: a POISONOUS AND HAZARDOUS SUBSTANCE which should be handled by trained staff only.
Storage:	-20 °C
Storage Comment:	Stable at -20°C for at least 1 year.
Expiry Date:	12 months



### Western Blotting

**Image 1.** Western blot analysis of extracts from COLO/RAW264.7 cells, using RFX3 Antibody. The lane on the right is treated with the synthesized peptide.



### Immunohistochemistry

**Image 2.** Immunohistochemistry analysis of paraffin-embedded human brain tissue, using RFX3 Antibody. The picture on the right is treated with the synthesized peptide.