



[Go to Product page](#)

Datasheet for ABIN1535428
anti-TUT1 antibody (AA 291-340)

1 Image

Overview

Quantity:	100 µL
Target:	TUT1
Binding Specificity:	AA 291-340
Reactivity:	Human
Host:	Rabbit
Clonality:	Polyclonal
Conjugate:	This TUT1 antibody is un-conjugated
Application:	ELISA, Immunohistochemistry (IHC)

Product Details

Immunogen:	The antiserum was produced against synthesized peptide derived from human TUT1.
Isotype:	IgG
Specificity:	TUT1 Antibody detects endogenous levels of total TUT1 protein.
Purification:	The antibody was purified from rabbit antiserum by affinity-chromatography using immunogen.
Purity:	> 95 %

Target Details

Target:	TUT1
Alternative Name:	TUT1 (TUT1 Products)
Background:	Synonyms: U6 snRNA-specific terminal uridylyltransferase 1, U6-TUTase, RNA-binding protein

Target Details

21, RNA-binding motif protein 21, TUT1, RBM21
NCBI Gene Symbol: TUT1

Molecular Weight: 93 kDa

Gene ID: 64852

OMIM: 610641

UniProt: [Q9H6E5](#)

Application Details

Application Notes: IHC: 1:50~1:100 ELISA: 1:20000

Comment: Unigene-Number: Hs.256184 (NCBI Gene Symbol: TUT1)

Restrictions: For Research Use only

Handling

Format: Liquid

Concentration: 1 mg/mL

Buffer: phosphate buffered saline (without Mg²⁺ and Ca²⁺), pH 7.4, 150 mM NaCl, 0.02 % sodium azide and 50 % glycerol.

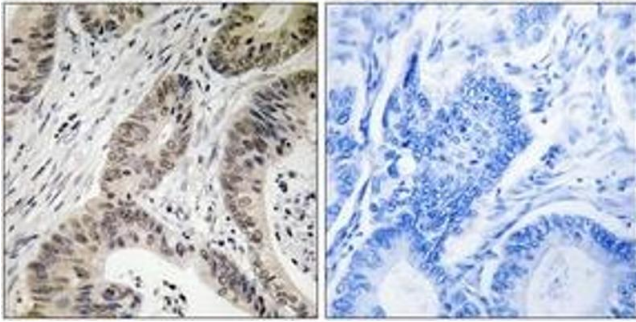
Preservative: Sodium azide

Precaution of Use: This product contains sodium azide: a POISONOUS AND HAZARDOUS SUBSTANCE which should be handled by trained staff only.

Storage: -20 °C

Storage Comment: Stable at -20°C for at least 1 year.

Expiry Date: 12 months



Immunohistochemistry

Image 1. Immunohistochemistry analysis of paraffin-embedded human colon carcinoma, using TUT1 Antibody. The picture on the right is treated with the synthesized peptide.