

Datasheet for ABIN1535455
anti-VPS26B antibody (AA 231-280)[Go to Product page](#)

1 Image

Overview

Quantity:	100 µg
Target:	VPS26B
Binding Specificity:	AA 231-280
Reactivity:	Human, Mouse
Host:	Rabbit
Clonality:	Polyclonal
Conjugate:	This VPS26B antibody is un-conjugated
Application:	ELISA, Western Blotting (WB)

Product Details

Immunogen:	The antiserum was produced against synthesized peptide derived from human VPS26B.
Isotype:	IgG
Specificity:	VPS26B Antibody detects endogenous levels of total VPS26B protein.
Purification:	The antibody was purified from rabbit antiserum by affinity-chromatography using immunogen.
Purity:	> 95 %

Target Details

Target:	VPS26B
Alternative Name:	VPS26B (VPS26B Products)
Background:	Synonyms: Vacuolar protein sorting-associated protein 26B, Vesicle protein sorting 26B,

Target Details

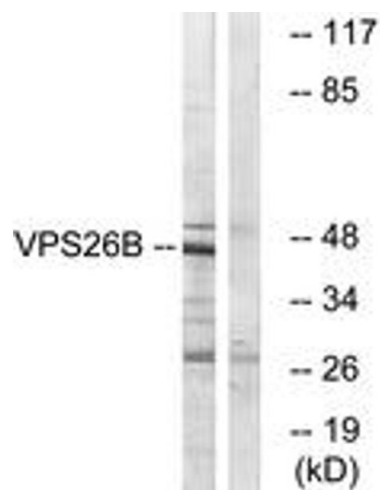
	VPS26B, NCBI Gene Symbol: VPS26B
Molecular Weight:	39 kDa
Gene ID:	112936
OMIM:	610027
UniProt:	Q4G0F5
Pathways:	Cellular Glucan Metabolic Process

Application Details

Application Notes:	WB: 1:500~1:1000 ELISA: 1:10000
Comment:	Unigene-Number: Hs.334684 (NCBI Gene Symbol: VPS26B)
Restrictions:	For Research Use only

Handling

Format:	Liquid
Concentration:	1 mg/mL
Buffer:	phosphate buffered saline (without Mg ²⁺ and Ca ²⁺), pH 7.4, 150 mM NaCl, 0.02 % sodium azide and 50 % glycerol.
Preservative:	Sodium azide
Precaution of Use:	This product contains sodium azide: a POISONOUS AND HAZARDOUS SUBSTANCE which should be handled by trained staff only.
Storage:	-20 °C
Storage Comment:	Stable at -20°C for at least 1 year.
Expiry Date:	12 months



Western Blotting

Image 1. Western blot analysis of extracts from LOVO cells, using VPS26B Antibody. The lane on the right is treated with the synthesized peptide.