

Datasheet for ABIN1535456
anti-Vangl1 antibody (AA 301-350)



[Go to Product page](#)

1 Image

Overview

Quantity:	100 µL
Target:	Vangl1
Binding Specificity:	AA 301-350
Reactivity:	Human, Mouse
Host:	Rabbit
Clonality:	Polyclonal
Conjugate:	This Vangl1 antibody is un-conjugated
Application:	Western Blotting (WB), ELISA

Product Details

Immunogen:	The antiserum was produced against synthesized peptide derived from human VANGL1.
Isotype:	IgG
Specificity:	VANGL1 Antibody detects endogenous levels of total VANGL1 protein.
Purification:	The antibody was purified from rabbit antiserum by affinity-chromatography using immunogen.
Purity:	> 95 %

Target Details

Target:	Vangl1
Alternative Name:	VANGL1 (Vangl1 Products)
Background:	Synonyms: Vang-like protein 1, Van Gogh-like protein 1, Strabismus 2, Loop-tail protein 2

Target Details

homolog, LPP2, VANGL1, STB2

NCBI Gene Symbol: VANGL1

Molecular Weight: 59 kDa

Gene ID: 81839

OMIM: 610132

UniProt: [Q8TAA9](#)

Pathways: [WNT Signaling](#)

Application Details

Application Notes: WB: 1:500~1:1000 ELISA: 1:20000

Comment: Unigene-Number: Hs.515130 (NCBI Gene Symbol: VANGL1)

Restrictions: For Research Use only

Handling

Format: Liquid

Concentration: 1 mg/mL

Buffer: phosphate buffered saline (without Mg²⁺ and Ca²⁺), pH 7.4, 150 mM NaCl, 0.02 % sodium azide and 50 % glycerol.

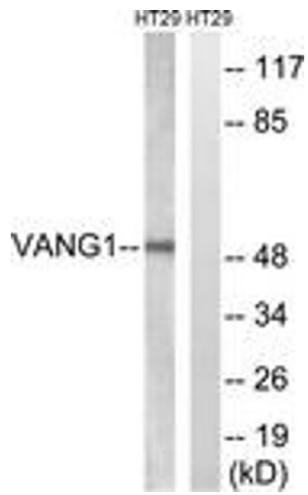
Preservative: Sodium azide

Precaution of Use: This product contains sodium azide: a POISONOUS AND HAZARDOUS SUBSTANCE which should be handled by trained staff only.

Storage: -20 °C

Storage Comment: Stable at -20°C for at least 1 year.

Expiry Date: 12 months



Western Blotting

Image 1. Western blot analysis of extracts from HT-29 cells, using VANG1 Antibody. The lane on the right is treated with the synthesized peptide.