

Datasheet for ABIN1535459

anti-Vesicle Transport Protein SFT2B (SFT2B) (AA 61-110) antibody



[Go to Product page](#)

1 Image

Overview

Quantity:	100 µg
Target:	Vesicle Transport Protein SFT2B (SFT2B)
Binding Specificity:	AA 61-110
Reactivity:	Human, Mouse, Rat
Host:	Rabbit
Clonality:	Polyclonal
Conjugate:	Un-conjugated
Application:	Western Blotting (WB), ELISA

Product Details

Immunogen:	The antiserum was produced against synthesized peptide derived from human SFT2B.
Isotype:	IgG
Specificity:	SFT2B Antibody detects endogenous levels of total SFT2B protein.
Purification:	The antibody was purified from rabbit antiserum by affinity-chromatography using immunogen.
Purity:	> 95 %

Target Details

Target:	Vesicle Transport Protein SFT2B (SFT2B)
Alternative Name:	SFT2B (SFT2B Products)
Background:	Synonyms: Vesicle transport protein SFT2B, SFT2 domain-containing protein 2, SFT2D2,

Target Details

NCBI Gene Symbol: SFT2B

Molecular Weight: 17 kDa

Gene ID: 375035

UniProt: [O95562](#)

Application Details

Application Notes: WB: 1:500~1:1000 ELISA: 1:40000

Comment: Unigene-Number: Hs.645435 (NCBI Gene Symbol: SFT2B)

Restrictions: For Research Use only

Handling

Format: Liquid

Concentration: 1 mg/mL

Buffer: phosphate buffered saline (without Mg²⁺ and Ca²⁺), pH 7.4, 150 mM NaCl, 0.02 % sodium azide and 50 % glycerol.

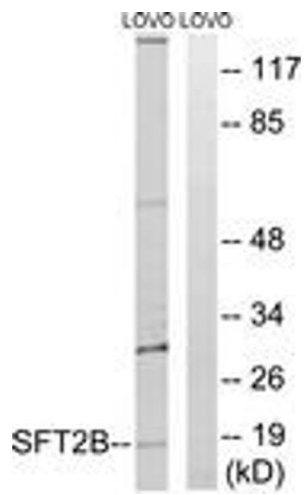
Preservative: Sodium azide

Precaution of Use: This product contains sodium azide: a POISONOUS AND HAZARDOUS SUBSTANCE which should be handled by trained staff only.

Storage: -20 °C

Storage Comment: Stable at -20°C for at least 1 year.

Expiry Date: 12 months



Western Blotting

Image 1. Western blot analysis of extracts from LOVO cells, using SFT2B Antibody. The lane on the right is treated with the synthesized peptide.