

Datasheet for ABIN1535464

anti-KCNAB3 antibody (AA 293-342)[Go to Product page](#)**1** Image

Overview

Quantity:	100 µL
Target:	KCNAB3
Binding Specificity:	AA 293-342
Reactivity:	Human, Rat, Mouse
Host:	Rabbit
Clonality:	Polyclonal
Conjugate:	This KCNAB3 antibody is un-conjugated
Application:	ELISA, Immunohistochemistry (IHC)

Product Details

Immunogen:	The antiserum was produced against synthesized peptide derived from human KCNAB3.
Isotype:	IgG
Specificity:	KCNAB3 Antibody detects endogenous levels of total KCNAB3 protein.
Purification:	The antibody was purified from rabbit antiserum by affinity-chromatography using immunogen.
Purity:	> 95 %

Target Details

Target:	KCNAB3
Alternative Name:	KCNAB3 (KCNAB3 Products)
Background:	Synonyms: Voltage-gated potassium channel subunit beta-3, K(+) channel subunit beta-3, Kv-

Target Details

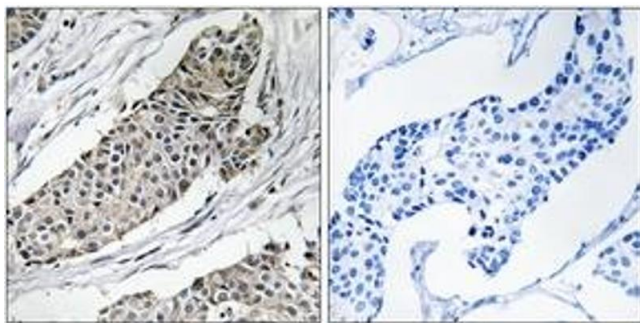
	beta-3, KCNAB3, KCNA3B NCBI Gene Symbol: KCNAB3
Molecular Weight:	43 kDa
Gene ID:	9196
OMIM:	604111
UniProt:	O43448

Application Details

Application Notes:	IHC: 1:50~1:100 ELISA: 1:10000
Comment:	Unigene-Number: Hs.435074 (NCBI Gene Symbol: KCNAB3)
Restrictions:	For Research Use only

Handling

Format:	Liquid
Concentration:	1 mg/mL
Buffer:	phosphate buffered saline (without Mg2+ and Ca2+), pH 7.4, 150 mM NaCl, 0.02 % sodium azide and 50 % glycerol.
Preservative:	Sodium azide
Precaution of Use:	This product contains sodium azide: a POISONOUS AND HAZARDOUS SUBSTANCE which should be handled by trained staff only.
Storage:	-20 °C
Storage Comment:	Stable at -20°C for at least 1 year.
Expiry Date:	12 months



Immunohistochemistry

Image 1. Immunohistochemistry analysis of paraffin-embedded human breast carcinoma tissue, using KCNAB3 Antibody. The picture on the right is treated with the synthesized peptide.