



[Go to Product page](#)

Datasheet for ABIN1535465
anti-WDHD1 antibody (AA 721-770)

1 Image

Overview

Quantity:	100 µL
Target:	WDHD1
Binding Specificity:	AA 721-770
Reactivity:	Human
Host:	Rabbit
Clonality:	Polyclonal
Conjugate:	This WDHD1 antibody is un-conjugated
Application:	Western Blotting (WB), ELISA

Product Details

Immunogen:	The antiserum was produced against synthesized peptide derived from human WDHD1.
Isotype:	IgG
Specificity:	WDHD1 Antibody detects endogenous levels of total WDHD1 protein.
Purification:	The antibody was purified from rabbit antiserum by affinity-chromatography using immunogen.
Purity:	> 95 %

Target Details

Target:	WDHD1
Alternative Name:	WDHD1 (WDHD1 Products)
Background:	Synonyms: WD repeat and HMG-box DNA-binding protein 1, Acidic nucleoplasmic DNA-binding

Target Details

protein 1, And-1, WDHD1, AND1
NCBI Gene Symbol: WDHD1

Molecular Weight: 125 kDa

Gene ID: 11169

OMIM: 608126

UniProt: [O75717](#)

Application Details

Application Notes: WB: 1:500~1:1000 ELISA: 1:10000

Comment: Unigene-Number: Hs.385998 (NCBI Gene Symbol: WDHD1)

Restrictions: For Research Use only

Handling

Format: Liquid

Concentration: 1 mg/mL

Buffer: phosphate buffered saline (without Mg²⁺ and Ca²⁺), pH 7.4, 150 mM NaCl, 0.02 % sodium azide and 50 % glycerol.

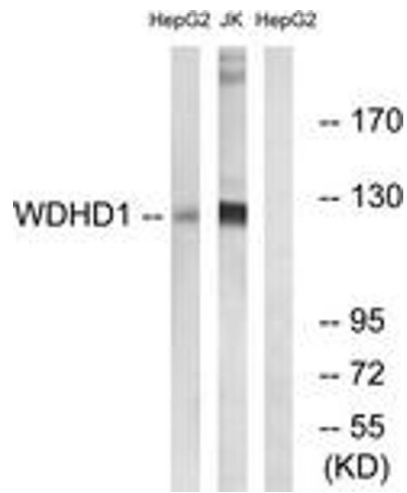
Preservative: Sodium azide

Precaution of Use: This product contains sodium azide: a POISONOUS AND HAZARDOUS SUBSTANCE which should be handled by trained staff only.

Storage: -20 °C

Storage Comment: Stable at -20°C for at least 1 year.

Expiry Date: 12 months



Western Blotting

Image 1. Western blot analysis of extracts from Jurkat/HepG2 cells, using WDHD1 Antibody. The lane on the right is treated with the synthesized peptide.