



[Go to Product page](#)

Datasheet for ABIN1535466  
**anti-WEE2 antibody (AA 151-200)**

1 Image

### Overview

Quantity:	100 µg
Target:	WEE2
Binding Specificity:	AA 151-200
Reactivity:	Human
Host:	Rabbit
Clonality:	Polyclonal
Conjugate:	This WEE2 antibody is un-conjugated
Application:	Western Blotting (WB), ELISA

### Product Details

Immunogen:	The antiserum was produced against synthesized peptide derived from human WEE2.
Isotype:	IgG
Specificity:	WEE2 Antibody detects endogenous levels of total WEE2 protein.
Purification:	The antibody was purified from rabbit antiserum by affinity-chromatography using immunogen.
Purity:	> 95 %

### Target Details

Target:	WEE2
Alternative Name:	WEE2 ( <a href="#">WEE2 Products</a> )
Background:	Synonyms: Wee1-like protein kinase 2, Wee1-like protein kinase 1B, Wee1B kinase, WEE2,

## Target Details

---

WEE1B  
NCBI Gene Symbol: WEE2

Molecular Weight: 62 kDa

Gene ID: 494551

UniProt: [P0C1S8](#)

Pathways: [M Phase](#)

## Application Details

---

Application Notes: WB: 1:500~1:1000 ELISA: 1:5000

Comment: Unigene-Number: Hs.657927 (NCBI Gene Symbol: WEE2)

Restrictions: For Research Use only

## Handling

---

Format: Liquid

Concentration: 1 mg/mL

Buffer: phosphate buffered saline (without Mg<sup>2+</sup> and Ca<sup>2+</sup>), pH 7.4, 150 mM NaCl, 0.02 % sodium azide and 50 % glycerol.

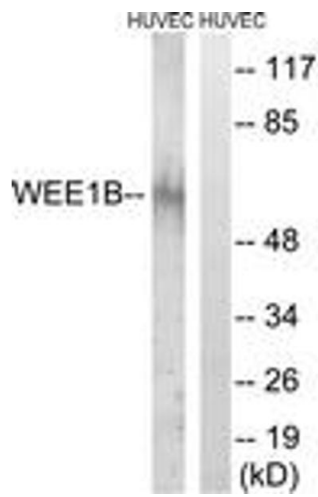
Preservative: Sodium azide

Precaution of Use: This product contains sodium azide: a POISONOUS AND HAZARDOUS SUBSTANCE which should be handled by trained staff only.

Storage: -20 °C

Storage Comment: Stable at -20°C for at least 1 year.

Expiry Date: 12 months



### Western Blotting

**Image 1.** Western blot analysis of extracts from HuvEc cells, using WEE2 Antibody. The lane on the right is treated with the synthesized peptide.