

Datasheet for ABIN1535467
anti-WASF3 antibody (AA 151-200)



[Go to Product page](#)

1 Image

Overview

Quantity:	100 µL
Target:	WASF3
Binding Specificity:	AA 151-200
Reactivity:	Human, Mouse
Host:	Rabbit
Clonality:	Polyclonal
Conjugate:	This WASF3 antibody is un-conjugated
Application:	ELISA, Immunohistochemistry (IHC)

Product Details

Immunogen:	The antiserum was produced against synthesized peptide derived from human WASF3.
Isotype:	IgG
Specificity:	WASF3 Antibody detects endogenous levels of total WASF3 protein.
Purification:	The antibody was purified from rabbit antiserum by affinity-chromatography using immunogen.
Purity:	> 95 %

Target Details

Target:	WASF3
Alternative Name:	WASF3 (WASF3 Products)
Background:	Synonyms: Wiskott-Aldrich syndrome protein family member 3, WASP family protein member 3,

Target Details

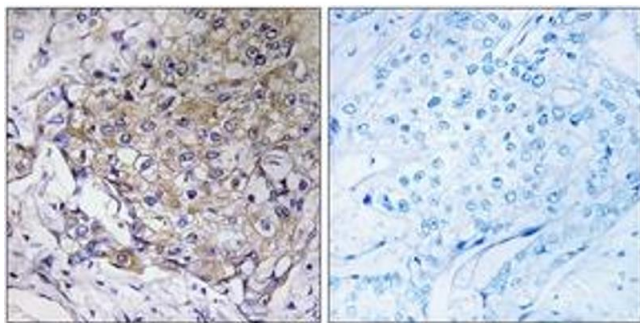
	Protein WAVE-3, Verprolin homology domain-containing protein 3, WASF3, KIAA0900, SCAR3, WAVE3, NCBI Gene Symbol: WASF3
Molecular Weight:	55 kDa
Gene ID:	10810
OMIM:	605068
UniProt:	Q9UPY6
Pathways:	RTK Signaling

Application Details

Application Notes:	IHC: 1:50~1:100 ELISA: 1:10000
Comment:	Unigene-Number: Hs.635221 (NCBI Gene Symbol: WASF3)
Restrictions:	For Research Use only

Handling

Format:	Liquid
Concentration:	1 mg/mL
Buffer:	phosphate buffered saline (without Mg2+ and Ca2+), pH 7.4, 150 mM NaCl, 0.02 % sodium azide and 50 % glycerol.
Preservative:	Sodium azide
Precaution of Use:	This product contains sodium azide: a POISONOUS AND HAZARDOUS SUBSTANCE which should be handled by trained staff only.
Storage:	-20 °C
Storage Comment:	Stable at -20°C for at least 1 year.
Expiry Date:	12 months



Immunohistochemistry

Image 1. Immunohistochemistry analysis of paraffin-embedded human breast carcinoma tissue, using WASF3 Antibody. The picture on the right is treated with the synthesized peptide.