

Datasheet for ABIN1535468
anti-WASF4 antibody (AA 190-239)[Go to Product page](#)

1 Image

Overview

Quantity:	100 µg
Target:	WASF4
Binding Specificity:	AA 190-239
Reactivity:	Human
Host:	Rabbit
Clonality:	Polyclonal
Conjugate:	This WASF4 antibody is un-conjugated
Application:	ELISA, Immunohistochemistry (IHC)

Product Details

Immunogen:	The antiserum was produced against synthesized peptide derived from human WASF4.
Isotype:	IgG
Specificity:	WASF4 Antibody detects endogenous levels of total WASF4 protein.
Purification:	The antibody was purified from rabbit antiserum by affinity-chromatography using immunogen.
Purity:	> 95 %

Target Details

Target:	WASF4
Alternative Name:	WASF4 (WASF4 Products)
Background:	Synonyms: Wiskott-Aldrich syndrome protein family member 4, WASP family protein member 4,

Target Details

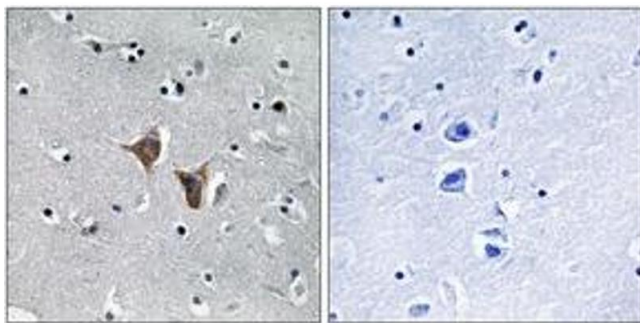
	WASF4, SCAR2, NCBI Gene Symbol: WASF4
Molecular Weight:	68 kDa
Gene ID:	644739
UniProt:	Q8IV90

Application Details

Application Notes:	IHC: 1:50~1:100 ELISA: 1:10000
Comment:	Unigene-Number: Hs.635221 (NCBI Gene Symbol: WASF4)
Restrictions:	For Research Use only

Handling

Format:	Liquid
Concentration:	1 mg/mL
Buffer:	phosphate buffered saline (without Mg ²⁺ and Ca ²⁺), pH 7.4, 150 mM NaCl, 0.02 % sodium azide and 50 % glycerol.
Preservative:	Sodium azide
Precaution of Use:	This product contains sodium azide: a POISONOUS AND HAZARDOUS SUBSTANCE which should be handled by trained staff only.
Storage:	-20 °C
Storage Comment:	Stable at -20°C for at least 1 year.
Expiry Date:	12 months



Immunohistochemistry

Image 1. Immunohistochemistry analysis of paraffin-embedded human brain, using WASF4 Antibody. The picture on the right is treated with the synthesized peptide.