

Datasheet for ABIN1535473  
**anti-ZC3H8 antibody (AA 81-130)**[Go to Product page](#)

## 2 Images

## Overview

Quantity:	100 µg
Target:	ZC3H8
Binding Specificity:	AA 81-130
Reactivity:	Human
Host:	Rabbit
Clonality:	Polyclonal
Conjugate:	This ZC3H8 antibody is un-conjugated
Application:	Western Blotting (WB), ELISA, Immunohistochemistry (IHC)

## Product Details

Immunogen:	The antiserum was produced against synthesized peptide derived from human ZC3H8.
Isotype:	IgG
Specificity:	ZC3H8 Antibody detects endogenous levels of total ZC3H8 protein.
Purification:	The antibody was purified from rabbit antiserum by affinity-chromatography using immunogen.
Purity:	> 95 %

## Target Details

Target:	ZC3H8
Alternative Name:	ZC3H8 ( <a href="#">ZC3H8 Products</a> )
Background:	Synonyms: Zinc finger CCCH domain-containing protein 8, ZC3H8, ZC3HDC8,

## Target Details

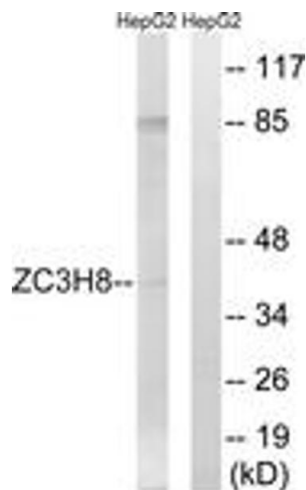
	NCBI Gene Symbol: ZC3H8
Molecular Weight:	33 kDa
Gene ID:	84524
UniProt:	<a href="#">Q8N5P1</a>

## Application Details

Application Notes:	WB: 1:500~1:1000 IHC: 1:50~1:100 ELISA: 1:40000
Comment:	Unigene-Number: Hs.418416 (NCBI Gene Symbol: ZC3H8)
Restrictions:	For Research Use only

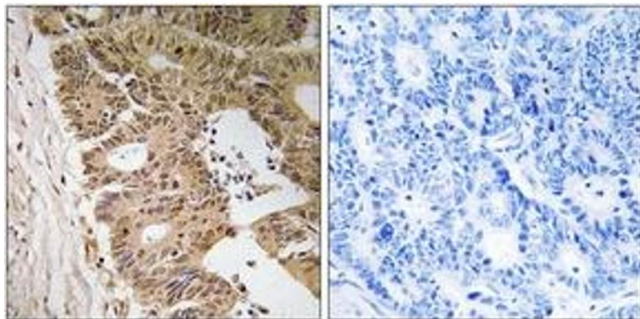
## Handling

Format:	Liquid
Concentration:	1 mg/mL
Buffer:	phosphate buffered saline (without Mg2+ and Ca2+), pH 7.4, 150 mM NaCl, 0.02 % sodium azide and 50 % glycerol.
Preservative:	Sodium azide
Precaution of Use:	This product contains sodium azide: a POISONOUS AND HAZARDOUS SUBSTANCE which should be handled by trained staff only.
Storage:	-20 °C
Storage Comment:	Stable at -20°C for at least 1 year.
Expiry Date:	12 months



#### Western Blotting

**Image 1.** Western blot analysis of extracts from HepG2 cells, using ZC3H8 Antibody. The lane on the right is treated with the synthesized peptide.



#### Immunohistochemistry

**Image 2.** Immunohistochemistry analysis of paraffin-embedded human colon carcinoma tissue, using ZC3H8 Antibody. The picture on the right is treated with the synthesized peptide.