

Datasheet for ABIN1535474
anti-ZC3H4 antibody (AA 771-820)[Go to Product page](#)

1 Image

Overview

Quantity:	100 µg
Target:	ZC3H4
Binding Specificity:	AA 771-820
Reactivity:	Human, Mouse
Host:	Rabbit
Clonality:	Polyclonal
Conjugate:	This ZC3H4 antibody is un-conjugated
Application:	Immunohistochemistry (IHC), ELISA

Product Details

Immunogen:	The antiserum was produced against synthesized peptide derived from human ZC3H4.
Isotype:	IgG
Specificity:	ZC3H4 Antibody detects endogenous levels of total ZC3H4 protein.
Purification:	The antibody was purified from rabbit antiserum by affinity-chromatography using immunogen.
Purity:	> 95 %

Target Details

Target:	ZC3H4
Alternative Name:	ZC3H4 (ZC3H4 Products)
Background:	Synonyms: Zinc finger CCCH domain-containing protein 4, ZC3H4, C19orf7, KIAA1064,

Target Details

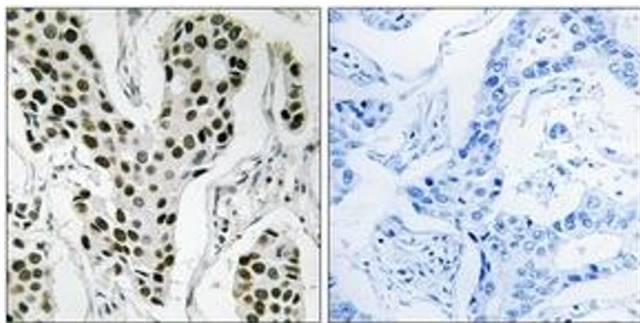
	NCBI Gene Symbol: ZC3H4
Molecular Weight:	140 kDa
Gene ID:	23211
UniProt:	Q9UPT8

Application Details

Application Notes:	IHC: 1:50~1:100 ELISA: 1:10000
Comment:	Unigene-Number: Hs.104661 (NCBI Gene Symbol: ZC3H4)
Restrictions:	For Research Use only

Handling

Format:	Liquid
Concentration:	1 mg/mL
Buffer:	phosphate buffered saline (without Mg2+ and Ca2+), pH 7.4, 150 mM NaCl, 0.02 % sodium azide and 50 % glycerol.
Preservative:	Sodium azide
Precaution of Use:	This product contains sodium azide: a POISONOUS AND HAZARDOUS SUBSTANCE which should be handled by trained staff only.
Storage:	-20 °C
Storage Comment:	Stable at -20°C for at least 1 year.
Expiry Date:	12 months



Immunohistochemistry

Image 1. Immunohistochemistry analysis of paraffin-embedded human breast carcinoma tissue, using ZC3H4 Antibody. The picture on the right is treated with the synthesized peptide.