



[Go to Product page](#)

Datasheet for ABIN1535479
anti-ZNF592 antibody (AA 961-1010)

2 Images

Overview

Quantity:	100 µL
Target:	ZNF592
Binding Specificity:	AA 961-1010
Reactivity:	Human, Mouse
Host:	Rabbit
Clonality:	Polyclonal
Conjugate:	This ZNF592 antibody is un-conjugated
Application:	ELISA, Western Blotting (WB), Immunohistochemistry (IHC)

Product Details

Immunogen:	The antiserum was produced against synthesized peptide derived from human ZNF592.
Isotype:	IgG
Specificity:	ZNF592 Antibody detects endogenous levels of total ZNF592 protein.
Purification:	The antibody was purified from rabbit antiserum by affinity-chromatography using immunogen.
Purity:	> 95 %

Target Details

Target:	ZNF592
Alternative Name:	ZNF592 (ZNF592 Products)
Background:	Synonyms: Zinc finger protein 592, ZNF592, KIAA0211,

Target Details

NCBI Gene Symbol: ZNF592

Molecular Weight: 137 kDa

Gene ID: 9640

UniProt: [Q92610](#)

Application Details

Application Notes: WB: 1:500~1:1000 IHC: 1:50~1:100 ELISA: 1:40000

Comment: Unigene-Number: Hs.79347 (NCBI Gene Symbol: ZNF592)

Restrictions: For Research Use only

Handling

Format: Liquid

Concentration: 1 mg/mL

Buffer: phosphate buffered saline (without Mg²⁺ and Ca²⁺), pH 7.4, 150 mM NaCl, 0.02 % sodium azide and 50 % glycerol.

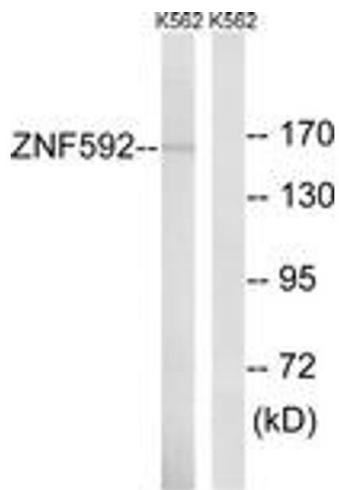
Preservative: Sodium azide

Precaution of Use: This product contains sodium azide: a POISONOUS AND HAZARDOUS SUBSTANCE which should be handled by trained staff only.

Storage: -20 °C

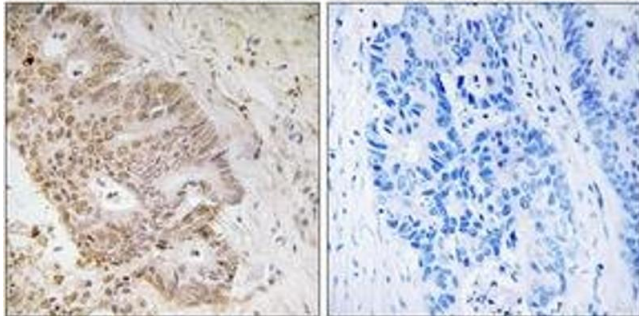
Storage Comment: Stable at -20°C for at least 1 year.

Expiry Date: 12 months



Western Blotting

Image 1. Western blot analysis of extracts from K562 cells, using ZNF592 Antibody. The lane on the right is treated with the synthesized peptide.



Immunohistochemistry

Image 2. Immunohistochemistry analysis of paraffin-embedded human colon carcinoma tissue, using ZNF592 Antibody. The picture on the right is treated with the synthesized peptide.