

Datasheet for ABIN1535488

anti-SLC39A7 antibody (AA 131-180)[Go to Product page](#)**1** Image

Overview

Quantity:	100 µL
Target:	SLC39A7
Binding Specificity:	AA 131-180
Reactivity:	Human, Mouse, Rat
Host:	Rabbit
Clonality:	Polyclonal
Conjugate:	This SLC39A7 antibody is un-conjugated
Application:	Western Blotting (WB), ELISA

Product Details

Immunogen:	The antiserum was produced against synthesized peptide derived from human SLC39A7.
Isotype:	IgG
Specificity:	SLC39A7 Antibody detects endogenous levels of total SLC39A7 protein.
Purification:	The antibody was purified from rabbit antiserum by affinity-chromatography using immunogen.
Purity:	> 95 %

Target Details

Target:	SLC39A7
Alternative Name:	SLC39A7 (SLC39A7 Products)
Background:	Synonyms: Zinc transporter SLC39A7, Solute carrier family 39 member 7, Histidine-rich

Target Details

membrane protein Ke4, SLC39A7, HKE4, RING5
NCBI Gene Symbol: SLC39A7

Molecular Weight: 50 kDa

Gene ID: 7922

OMIM: 601416

UniProt: [Q92504](#)

Pathways: [Transition Metal Ion Homeostasis](#)

Application Details

Application Notes: WB: 1:500~1:1000 ELISA: 1:5000

Comment: Unigene-Number: Hs.631995 (NCBI Gene Symbol: SLC39A7)

Restrictions: For Research Use only

Handling

Format: Liquid

Concentration: 1 mg/mL

Buffer: phosphate buffered saline (without Mg²⁺ and Ca²⁺), pH 7.4, 150 mM NaCl, 0.02 % sodium azide and 50 % glycerol.

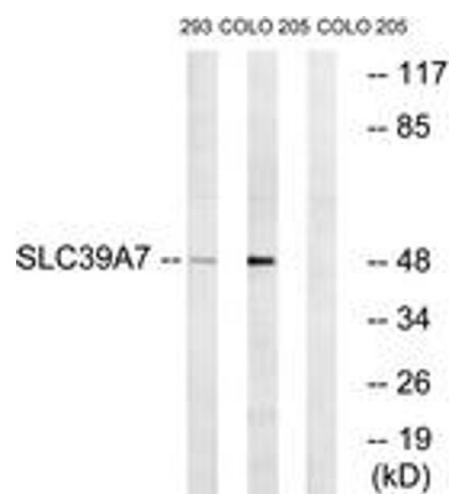
Preservative: Sodium azide

Precaution of Use: This product contains sodium azide: a POISONOUS AND HAZARDOUS SUBSTANCE which should be handled by trained staff only.

Storage: -20 °C

Storage Comment: Stable at -20°C for at least 1 year.

Expiry Date: 12 months



Western Blotting

Image 1. Western blot analysis of extracts from 293/COLO cells, using SLC39A7 Antibody. The lane on the right is treated with the synthesized peptide.