

Datasheet for ABIN1535509

**anti-CD200R1 antibody (AA 241-290)**[Go to Product page](#)**1** Image

## Overview

Quantity:	100 µL
Target:	CD200R1
Binding Specificity:	AA 241-290
Reactivity:	Human
Host:	Rabbit
Clonality:	Polyclonal
Conjugate:	This CD200R1 antibody is un-conjugated
Application:	Western Blotting (WB), ELISA

## Product Details

Immunogen:	The antiserum was produced against synthesized peptide derived from human MOX2R.
Isotype:	IgG
Specificity:	MOX2R Antibody detects endogenous levels of total MOX2R protein.
Purification:	The antibody was purified from rabbit antiserum by affinity-chromatography using immunogen.
Purity:	> 95 %

## Target Details

Target:	CD200R1
Alternative Name:	MOX2R ( <a href="#">CD200R1 Products</a> )
Background:	Synonyms: CD200 cell surface glycoprotein receptor, CD200R1, Cell surface glycoprotein OX2

## Target Details

receptor precursor, CRTR2, MOX2R, OX2R  
NCBI Gene Symbol: MOX2R

Molecular Weight: 36 kDa

Gene ID: 131450

OMIM: 607546

UniProt: [Q8TD46](#)

## Application Details

Application Notes: WB: 1:500~1:1000 ELISA: 1:40000

Comment: Unigene-Number: Hs.309158 (NCBI Gene Symbol: MOX2R)

Restrictions: For Research Use only

## Handling

Format: Liquid

Concentration: 1 mg/mL

Buffer: phosphate buffered saline (without Mg<sup>2+</sup> and Ca<sup>2+</sup>), pH 7.4, 150 mM NaCl, 0.02 % sodium azide and 50 % glycerol.

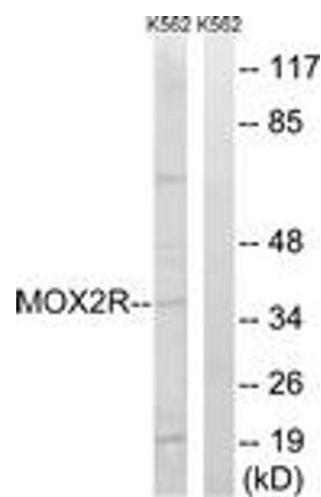
Preservative: Sodium azide

Precaution of Use: This product contains sodium azide: a POISONOUS AND HAZARDOUS SUBSTANCE which should be handled by trained staff only.

Storage: -20 °C

Storage Comment: Stable at -20°C for at least 1 year.

Expiry Date: 12 months



Western Blotting

**Image 1.** Western blot analysis of extracts from K562 cells, using MOX2R Antibody. The lane on the right is treated with the synthesized peptide.