

Datasheet for ABIN1535560

anti-Adenosine A3 Receptor antibody (AA 269-318)[Go to Product page](#)**2** Images

Overview

Quantity:	100 µg
Target:	Adenosine A3 Receptor (ADORA3)
Binding Specificity:	AA 269-318
Reactivity:	Human
Host:	Rabbit
Clonality:	Polyclonal
Conjugate:	This Adenosine A3 Receptor antibody is un-conjugated
Application:	Western Blotting (WB), ELISA, Immunofluorescence (IF)

Product Details

Immunogen:	The antiserum was produced against synthesized peptide derived from human ADORA3.
Isotype:	IgG
Specificity:	ADORA3 Antibody detects endogenous levels of total ADORA3 protein.
Purification:	The antibody was purified from rabbit antiserum by affinity-chromatography using immunogen.
Purity:	> 95 %

Target Details

Target:	Adenosine A3 Receptor (ADORA3)
Alternative Name:	ADORA3 (ADORA3 Products)
Background:	Synonyms: Adenosine A3 receptor, ADORA3,

Target Details

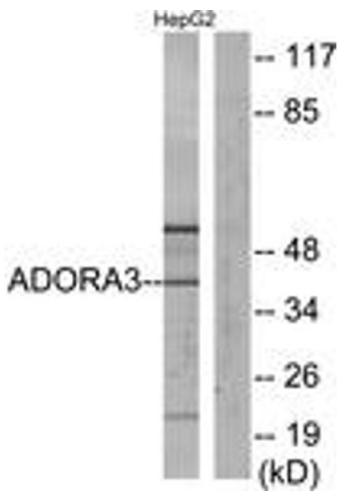
	NCBI Gene Symbol: ADORA3
Molecular Weight:	36 kDa
Gene ID:	140
OMIM:	600445
UniProt:	P33765
Pathways:	Hormone Transport , cAMP Metabolic Process , Regulation of Leukocyte Mediated Immunity , Positive Regulation of Immune Effector Process

Application Details

Application Notes:	WB: 1:500~1:1000 IF: 1:100~1:500 ELISA: 1:5000
Comment:	Unigene-Number: Hs.281342 (NCBI Gene Symbol: ADORA3)
Restrictions:	For Research Use only

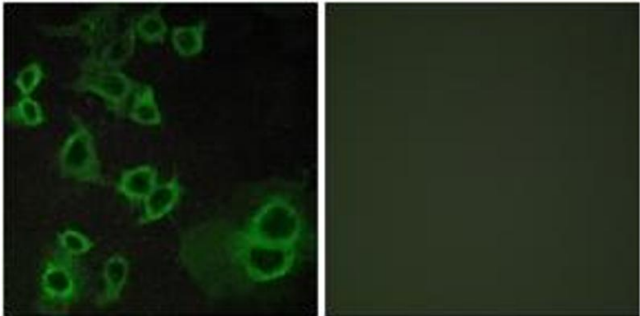
Handling

Format:	Liquid
Concentration:	1 mg/mL
Buffer:	phosphate buffered saline (without Mg ²⁺ and Ca ²⁺), pH 7.4, 150 mM NaCl, 0.02 % sodium azide and 50 % glycerol.
Preservative:	Sodium azide
Precaution of Use:	This product contains sodium azide: a POISONOUS AND HAZARDOUS SUBSTANCE which should be handled by trained staff only.
Storage:	-20 °C
Storage Comment:	Stable at -20°C for at least 1 year.
Expiry Date:	12 months



Western Blotting

Image 1. Western blot analysis of extracts from HepG2 cells, using ADORA3 Antibody. The lane on the right is treated with the synthesized peptide.



Immunofluorescence

Image 2. Immunofluorescence analysis of COS7 cells, using ADORA3 Antibody. The picture on the right is treated with the synthesized peptide.