

[Go to Product page](#)

Datasheet for ABIN1535565

anti-Apelin Receptor antibody (AA 141-190)**2** Images

Overview

Quantity:	100 µg
Target:	Apelin Receptor (APLNR)
Binding Specificity:	AA 141-190
Reactivity:	Human
Host:	Rabbit
Clonality:	Polyclonal
Conjugate:	This Apelin Receptor antibody is un-conjugated
Application:	ELISA, Western Blotting (WB), Immunofluorescence (IF)

Product Details

Immunogen:	The antiserum was produced against synthesized peptide derived from human AGTRL1.
Isotype:	IgG
Specificity:	AGTRL1 Antibody detects endogenous levels of total AGTRL1 protein.
Purification:	The antibody was purified from rabbit antiserum by affinity-chromatography using immunogen.
Purity:	> 95 %

Target Details

Target:	Apelin Receptor (APLNR)
Alternative Name:	AGTRL1 (APLNR Products)
Background:	Synonyms: Apelin receptor, G-protein coupled receptor APJ, Angiotensin receptor-like 1, HG11,

Target Details

AGTRL1, APJ
NCBI Gene Symbol: APLNR

Molecular Weight: 42 kDa

Gene ID: 187

OMIM: 600052

UniProt: [P35414](#)

Application Details

Application Notes: WB: 1:500~1:1000 IF: 1:100~1:500 ELISA: 1:10000

Comment: Unigene-Number: Hs.724387 (NCBI Gene Symbol: APLNR)

Restrictions: For Research Use only

Handling

Format: Liquid

Concentration: 1 mg/mL

Buffer: phosphate buffered saline (without Mg²⁺ and Ca²⁺), pH 7.4, 150 mM NaCl, 0.02 % sodium azide and 50 % glycerol.

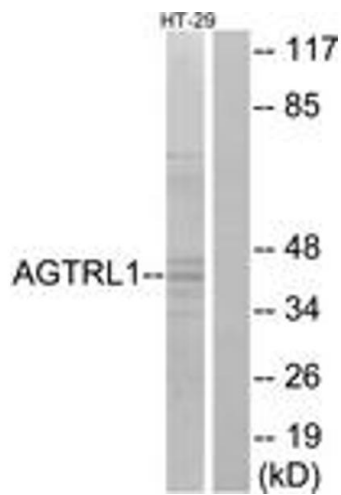
Preservative: Sodium azide

Precaution of Use: This product contains sodium azide: a POISONOUS AND HAZARDOUS SUBSTANCE which should be handled by trained staff only.

Storage: -20 °C

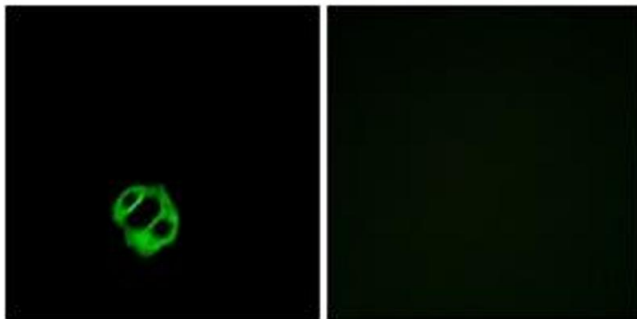
Storage Comment: Stable at -20°C for at least 1 year.

Expiry Date: 12 months



Western Blotting

Image 1. Western blot analysis of extracts from HT-29 cells, using AGTRL1 Antibody. The lane on the right is treated with the synthesized peptide.



Immunofluorescence

Image 2. Immunofluorescence analysis of MCF7 cells, using AGTRL1 Antibody. The picture on the right is treated with the synthesized peptide.