

Datasheet for ABIN1535568
anti-BRS3 antibody (AA 161-210)

2 Images

[Go to Product page](#)

Overview

Quantity:	100 µg
Target:	BRS3
Binding Specificity:	AA 161-210
Reactivity:	Human
Host:	Rabbit
Clonality:	Polyclonal
Conjugate:	This BRS3 antibody is un-conjugated
Application:	Western Blotting (WB), ELISA, Immunofluorescence (IF)

Product Details

Immunogen:	The antiserum was produced against synthesized peptide derived from human BRS3.
Isotype:	IgG
Specificity:	BRS3 Antibody detects endogenous levels of total BRS3 protein.
Purification:	The antibody was purified from rabbit antiserum by affinity-chromatography using immunogen.
Purity:	> 95 %

Target Details

Target:	BRS3
Alternative Name:	BRS3 (BRS3 Products)
Background:	Synonyms: Bombesin receptor subtype-3, BRS-3, BRS3

Target Details

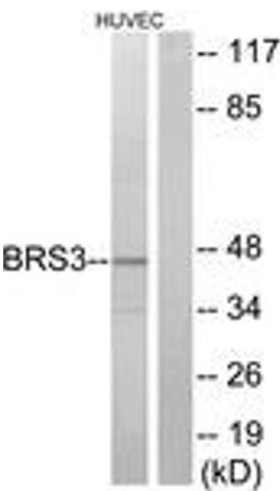
	NCBI Gene Symbol: BRS3
Molecular Weight:	44 kDa
Gene ID:	680
OMIM:	300107
UniProt:	P32247
Pathways:	Feeding Behaviour

Application Details

Application Notes:	WB: 1:500~1:1000 IF: 1:100~1:500 ELISA: 1:40000
Comment:	Unigene-Number: Hs.121484 (NCBI Gene Symbol: BRS3)
Restrictions:	For Research Use only

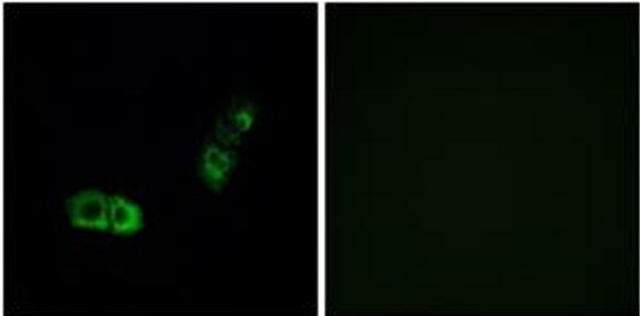
Handling

Format:	Liquid
Concentration:	1 mg/mL
Buffer:	phosphate buffered saline (without Mg ²⁺ and Ca ²⁺), pH 7.4, 150 mM NaCl, 0.02 % sodium azide and 50 % glycerol.
Preservative:	Sodium azide
Precaution of Use:	This product contains sodium azide: a POISONOUS AND HAZARDOUS SUBSTANCE which should be handled by trained staff only.
Storage:	-20 °C
Storage Comment:	Stable at -20°C for at least 1 year.
Expiry Date:	12 months



Western Blotting

Image 1. Western blot analysis of extracts from HuvEc cells, using BRS3 Antibody. The lane on the right is treated with the synthesized peptide.



Immunofluorescence

Image 2. Immunofluorescence analysis of A549 cells, using BRS3 Antibody. The picture on the right is treated with the synthesized peptide.