



[Go to Product page](#)

Datasheet for ABIN1535572
anti-CCRL2 antibody (AA 141-190)

2 Images

Overview

Quantity:	100 µg
Target:	CCRL2
Binding Specificity:	AA 141-190
Reactivity:	Human
Host:	Rabbit
Clonality:	Polyclonal
Conjugate:	This CCRL2 antibody is un-conjugated
Application:	Western Blotting (WB), ELISA, Immunofluorescence (IF)

Product Details

Immunogen:	The antiserum was produced against synthesized peptide derived from human CCRL2.
Isotype:	IgG
Specificity:	CCRL2 Antibody detects endogenous levels of total CCRL2 protein.
Purification:	The antibody was purified from rabbit antiserum by affinity-chromatography using immunogen.
Purity:	> 95 %

Target Details

Target:	CCRL2
Alternative Name:	CCRL2 (CCRL2 Products)
Background:	Synonyms: C-C chemokine receptor-like 2, Putative MCP-1 chemokine receptor, Chemokine

Target Details

receptor CCR11, Chemokine receptor X, CCRL2, CCR11, CCR6, CKRX, CRAM, HCR,
NCBI Gene Symbol: CCRL2

Molecular Weight: 39 kDa

Gene ID: 9034

OMIM: 608379

UniProt: [O00421](#)

Application Details

Application Notes: WB: 1:500~1:1000 IF: 1:100~1:500 ELISA: 1:20000

Comment: Unigene-Number: Hs.535713, Hs.617040 (NCBI Gene Symbol: CCRL2)

Restrictions: For Research Use only

Handling

Format: Liquid

Concentration: 1 mg/mL

Buffer: phosphate buffered saline (without Mg²⁺ and Ca²⁺), pH 7.4, 150 mM NaCl, 0.02 % sodium azide and 50 % glycerol.

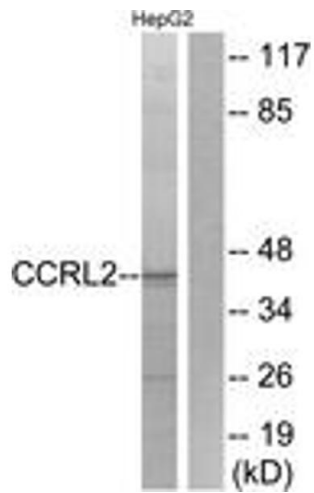
Preservative: Sodium azide

Precaution of Use: This product contains sodium azide: a POISONOUS AND HAZARDOUS SUBSTANCE which should be handled by trained staff only.

Storage: -20 °C

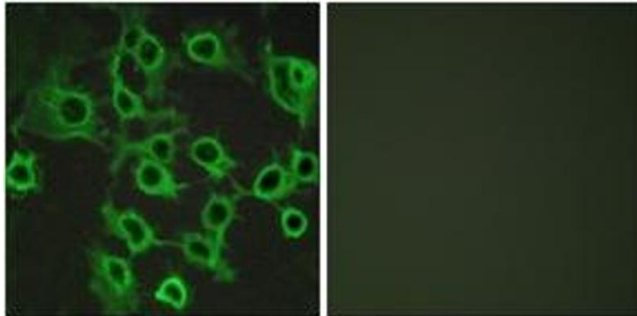
Storage Comment: Stable at -20°C for at least 1 year.

Expiry Date: 12 months



Western Blotting

Image 1. Western blot analysis of extracts from HepG2 cells, using CCRL2 Antibody. The lane on the right is treated with the synthesized peptide.



Immunofluorescence

Image 2. Immunofluorescence analysis of COS7 cells, using CCRL2 Antibody. The picture on the right is treated with the synthesized peptide.