

Datasheet for ABIN1535576  
**anti-CXCR7 antibody (AA 311-360)**



[Go to Product page](#)

2 Images

## Overview

Quantity:	100 µL
Target:	CXCR7
Binding Specificity:	AA 311-360
Reactivity:	Human, Mouse, Rat
Host:	Rabbit
Clonality:	Polyclonal
Conjugate:	This CXCR7 antibody is un-conjugated
Application:	Western Blotting (WB), ELISA, Immunofluorescence (IF)

## Product Details

Immunogen:	The antiserum was produced against synthesized peptide derived from human CXCR7.
Isotype:	IgG
Specificity:	CXCR7 Antibody detects endogenous levels of total CXCR7 protein.
Purification:	The antibody was purified from rabbit antiserum by affinity-chromatography using immunogen.
Purity:	> 95 %

## Target Details

Target:	CXCR7
Alternative Name:	CXCR7 ( <a href="#">CXCR7 Products</a> )
Background:	Synonyms: chemokine orphan receptor 1, CXCR-7, CXCR7, G-protein coupled receptor 159, G-

## Target Details

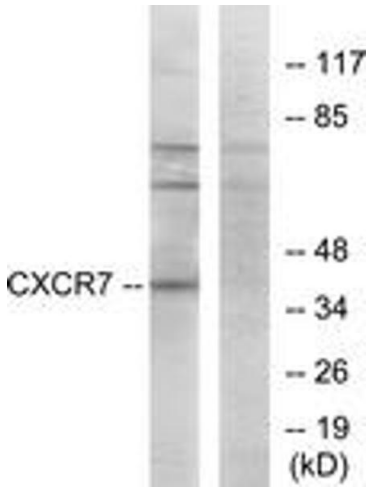
	protein coupled receptor RDC1, RDC1 NCBI Gene Symbol: CXCR7
Molecular Weight:	41 kDa
Gene ID:	57007
OMIM:	610376
UniProt:	<a href="#">P25106</a>
Pathways:	<a href="#">Myometrial Relaxation and Contraction, Negative Regulation of intrinsic apoptotic Signaling</a>

## Application Details

Application Notes:	WB: 1:500~1:1000 IF: 1:100~1:500 ELISA: 1:1000
Comment:	Unigene-Number: Hs.471751 (NCBI Gene Symbol: CXCR7)
Restrictions:	For Research Use only

## Handling

Format:	Liquid
Concentration:	1 mg/mL
Buffer:	phosphate buffered saline (without Mg <sup>2+</sup> and Ca <sup>2+</sup> ), pH 7.4, 150 mM NaCl, 0.02 % sodium azide and 50 % glycerol.
Preservative:	Sodium azide
Precaution of Use:	This product contains sodium azide: a POISONOUS AND HAZARDOUS SUBSTANCE which should be handled by trained staff only.
Storage:	-20 °C
Storage Comment:	Stable at -20°C for at least 1 year.
Expiry Date:	12 months



#### Western Blotting

**Image 1.** Western blot analysis of extracts from COS7 cells, using CXCR7 Antibody. The lane on the right is treated with the synthesized peptide.



#### Immunofluorescence

**Image 2.** Immunofluorescence analysis of COS7 cells, using CXCR7 Antibody. The picture on the right is treated with the synthesized peptide.