



[Go to Product page](#)

Datasheet for ABIN1535581
anti-CRHR2 antibody (AA 71-120)

2 Images

Overview

Quantity:	100 µg
Target:	CRHR2
Binding Specificity:	AA 71-120
Reactivity:	Human, Mouse, Rat
Host:	Rabbit
Clonality:	Polyclonal
Conjugate:	This CRHR2 antibody is un-conjugated
Application:	Western Blotting (WB), ELISA, Immunofluorescence (IF)

Product Details

Immunogen:	The antiserum was produced against synthesized peptide derived from human CRHR2.
Isotype:	IgG
Specificity:	CRHR2 Antibody detects endogenous levels of total CRHR2 protein.
Purification:	The antibody was purified from rabbit antiserum by affinity-chromatography using immunogen.
Purity:	> 95 %

Target Details

Target:	CRHR2
Alternative Name:	CRHR2 (CRHR2 Products)
Background:	Synonyms: Corticotropin-releasing factor receptor 2, CRF-R 2, CRF2, Corticotropin-releasing

Target Details

hormone receptor 2, CRH-R 2, CRHR2, CRF2R, CRH2R,
NCBI Gene Symbol: CRHR2

Molecular Weight: 47 kDa

Gene ID: 1395

OMIM: 602034

UniProt: [Q13324](#)

Pathways: [Negative Regulation of Hormone Secretion](#), [cAMP Metabolic Process](#), [Feeding Behaviour](#)

Application Details

Application Notes: WB: 1:500~1:1000 IF: 1:100~1:500 ELISA: 1:10000

Comment: Unigene-Number: Hs.546246 (NCBI Gene Symbol: CRHR2)

Restrictions: For Research Use only

Handling

Format: Liquid

Concentration: 1 mg/mL

Buffer: phosphate buffered saline (without Mg²⁺ and Ca²⁺), pH 7.4, 150 mM NaCl, 0.02 % sodium azide and 50 % glycerol.

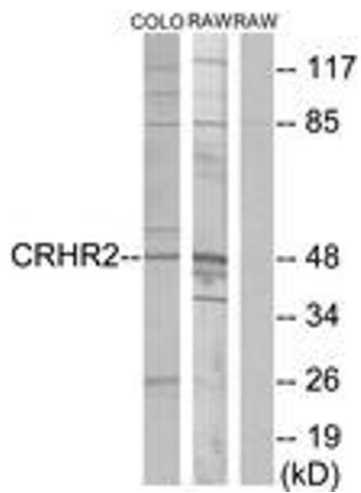
Preservative: Sodium azide

Precaution of Use: This product contains sodium azide: a POISONOUS AND HAZARDOUS SUBSTANCE which should be handled by trained staff only.

Storage: -20 °C

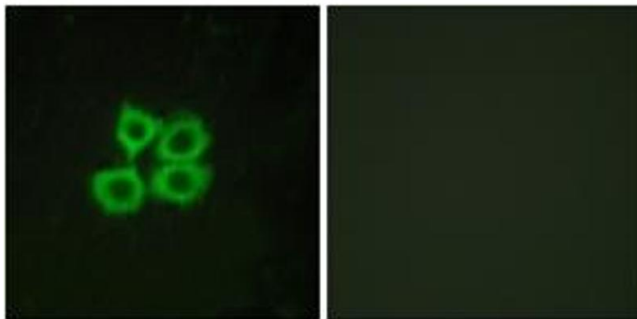
Storage Comment: Stable at -20°C for at least 1 year.

Expiry Date: 12 months



Western Blotting

Image 1. Western blot analysis of extracts from COLO205/RAW264.7 cells, using CRHR2 Antibody. The lane on the right is treated with the synthesized peptide.



Immunofluorescence

Image 2. Immunofluorescence analysis of MCF7 cells, using CRHR2 Antibody. The picture on the right is treated with the synthesized peptide.