



[Go to Product page](#)

Datasheet for ABIN1535589
anti-S1PR3 antibody (AA 1-50)

2 Images

Overview

Quantity:	100 µL
Target:	S1PR3
Binding Specificity:	AA 1-50
Reactivity:	Human
Host:	Rabbit
Clonality:	Polyclonal
Conjugate:	This S1PR3 antibody is un-conjugated
Application:	Western Blotting (WB), ELISA, Immunofluorescence (IF)

Product Details

Immunogen:	The antiserum was produced against synthesized peptide derived from human EDG3.
Isotype:	IgG
Specificity:	EDG3 Antibody detects endogenous levels of total EDG3 protein.
Purification:	The antibody was purified from rabbit antiserum by affinity-chromatography using immunogen.
Purity:	> 95 %

Target Details

Target:	S1PR3
Alternative Name:	EDG3 (S1PR3 Products)
Background:	Synonyms: Sphingosine 1-phosphate receptor Edg-3, S1P receptor Edg-3, Endothelial

Target Details

differentiation G-protein coupled receptor 3, Sphingosine 1-phosphate receptor 3, S1P3, EDG3,
NCBI Gene Symbol: S1PR3

Molecular Weight: 42 kDa

Gene ID: 1903

OMIM: 601965

UniProt: [Q99500](#)

Application Details

Application Notes: WB: 1:500~1:1000 IF: 1:100~1:500 ELISA: 1:5000

Comment: Unigene-Number: Hs.585118 (NCBI Gene Symbol: S1PR3)

Restrictions: For Research Use only

Handling

Format: Liquid

Concentration: 1 mg/mL

Buffer: phosphate buffered saline (without Mg²⁺ and Ca²⁺), pH 7.4, 150 mM NaCl, 0.02 % sodium azide and 50 % glycerol.

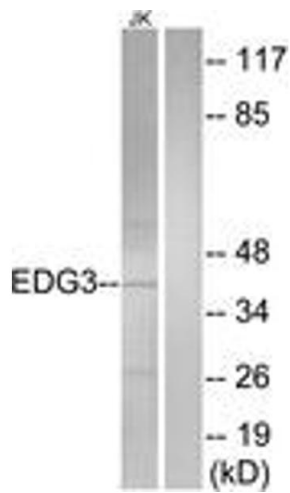
Preservative: Sodium azide

Precaution of Use: This product contains sodium azide: a POISONOUS AND HAZARDOUS SUBSTANCE which should be handled by trained staff only.

Storage: -20 °C

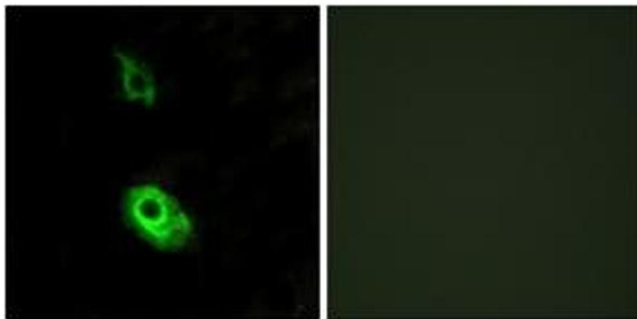
Storage Comment: Stable at -20°C for at least 1 year.

Expiry Date: 12 months



Western Blotting

Image 1. Western blot analysis of extracts from Jurkat cells, using EDG3 Antibody. The lane on the right is treated with the synthesized peptide.



Immunofluorescence

Image 2. Immunofluorescence analysis of HeLa cells, using EDG3 Antibody. The picture on the right is treated with the synthesized peptide.