



[Go to Product page](#)

Datasheet for ABIN1535596
anti-EMR2 antibody (AA 765-814)

2 Images

Overview

Quantity:	100 µL
Target:	EMR2
Binding Specificity:	AA 765-814
Reactivity:	Human
Host:	Rabbit
Clonality:	Polyclonal
Conjugate:	This EMR2 antibody is un-conjugated
Application:	Western Blotting (WB), ELISA, Immunofluorescence (IF)

Product Details

Immunogen:	The antiserum was produced against synthesized peptide derived from human EMR2.
Isotype:	IgG
Specificity:	EMR2 Antibody detects endogenous levels of total EMR2 protein.
Purification:	The antibody was purified from rabbit antiserum by affinity-chromatography using immunogen.
Purity:	> 95 %

Target Details

Target:	EMR2
Alternative Name:	EMR2 (EMR2 Products)
Background:	Synonyms: EGF-like module-containing mucin-like hormone receptor-like 2, EGF-like module

Target Details

EMR2, CD312 antigen, EMR2,
NCBI Gene Symbol: EMR2

Molecular Weight: 90 kDa

Gene ID: 30817

OMIM: 606100

UniProt: [Q9UHX3](#)

Application Details

Application Notes: WB: 1:500~1:1000 IF: 1:100~1:500 ELISA: 1:20000

Comment: Unigene-Number: Hs.531619 (NCBI Gene Symbol: EMR2)

Restrictions: For Research Use only

Handling

Format: Liquid

Concentration: 1 mg/mL

Buffer: phosphate buffered saline (without Mg²⁺ and Ca²⁺), pH 7.4, 150 mM NaCl, 0.02 % sodium azide and 50 % glycerol.

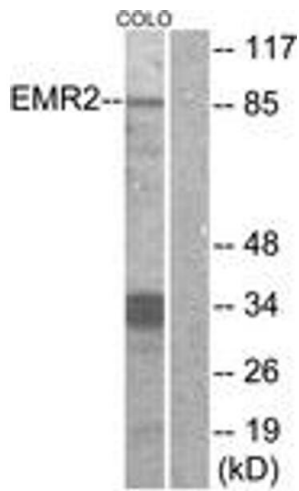
Preservative: Sodium azide

Precaution of Use: This product contains sodium azide: a POISONOUS AND HAZARDOUS SUBSTANCE which should be handled by trained staff only.

Storage: -20 °C

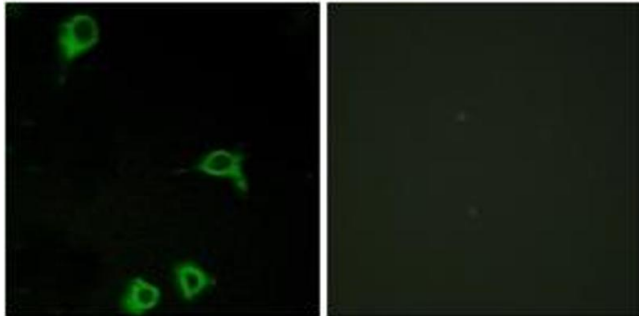
Storage Comment: Stable at -20°C for at least 1 year.

Expiry Date: 12 months



Western Blotting

Image 1. Western blot analysis of extracts from COLO cells, using EMR2 Antibody. The lane on the right is treated with the synthesized peptide.



Immunofluorescence

Image 2. Immunofluorescence analysis of COS7 cells, using EMR2 Antibody. The picture on the right is treated with the synthesized peptide.